



Unimod Pro

© 1990-2014 « »

440028, , . , 1
(fax): +7 (8412) 55-58-90, 49-95-39
fax: +7 (8412) 49-85-13
e-mail: trei@trei-gmbh.ru

*QNX® is a registered trademark of QNX Software Systems Ltd.
Windows® is a registered trademark of Microsoft Corporation.
Disk OnChip® and TrueFFS® are a registered trademark of M-systems Ltd.
iFIX® is a registered trademark of Intellution, Inc.*

All other brand or product names are trademarks or registered trademarks of their respective holders

	9
«LIBRARY»	9
« »	10
« »	13
« / »	13
« »	14
« »	15
« »	15
.....	16
	16
.....	16
-	20
- PC	20
- M841E	21
- M911E	21
- M811E	21
	827L, 827L2_LCD,
827L3_VFD.....	21
/	22
M831A	22
M831R3	22
M831T	23
M831V	23
/ M832	23
M833O_S	24
M835T	25
/ M841B	25
M841O	26
M841R1	26
M841R2	26
M843D	26
M842A	27
M843D_S	27
M843F	27
M843O	27
M843O_S	28
M845A1	28
M845A2	28
M845A3	29

M845T	29
M851A	29
/ M851B	29
M851O	30
/ M852B	30
/ M852O	31
/ M853	31
/ M854B	32
M854D	33
M854O	33
M855A	34
/ XM841B	34
XM841O	34
XM843D	35
XM843D_S	35
931	35
931R3	36
931	36
931V	36
932	37
932 G	37
933O_S	37
935	37
HART 941A	38
/ 941B	38
941	38
941R1	39
941R2	39
942	39
943D	40
943D_S	40
943F	40
943O	40
943O_S	41
945A1	41
945A2	41
945A3	42
945	42
951A	42
/ 951B	42
951O	43
/ 952B	43
952O	44
/ 953	44
953 01	45
953 02	46
953 03	47
953 04	48
953 05	49
953 06	50
953 07	50
953 08	51
953 09	52
953 10	52

	953 11	53
/	954B	54
	954D	55
	954O	55
	955A	55
.....		56
	W931	56
	W931R3	56
	W931	57
	W931V	57
	W933O_S	57
	W935	58
/	W941B	58
	W941	59
	W941R1	59
	W941R2	59
	W942A	60
	W943D	60
	W943D_S	60
	W943F	61
	W943O	61
	W943O_S	61
	W945A1	61
	W945A2	62
	W945A3	62
	W945	63
	W951A	63
/	W951B	63
	W951O	64
/	W952B	64
	W952O	65
/	W953	65
	W953 01	66
	W953 02	67
	W953 03	68
	W953 04	69
	W953 05	70
	W953 06	71
	W953 07	71
	W953 08	72
	W953 09	73
	W953 10	73
	W953 11	74
/	W954B	75
	W954D	76
	W954O	76
	W955A	76
	M921E	77
E931A	77
E931R3	77
E931T	77
E931V	78
E933O_S	78

E941B	78
E941O	78
E941R1	78
E941R2	79
E943D	79
E943D_S	79
E943F	79
E943O	79
E943O_S	79
E951A	79
E951B	79
E951O	80
E952B	80
E952O	80
E953C	80
E953C01	80
E953C02	81
E953C03	81
E953C04	82
E953C05	82
E953C06	83
E953C07	83
E953C08	84
E953C09	84
E953C10	84
E953C11	85
E954B	85
E954D	86
E954O	86
-	86
-	86
-	101
M2DI	101
M4DI	102
-	102
M2DO	102
M4DO	102
MDO	102
-	102
M2CI/DI	102
4CI/DI	102
MCI-MI	103
MCI-TPU	103
-	104
-	104
MAOI	104
MAOU	104
-	105
MAI	105
MAI/C	105

M4AI	105
MTR	105
MTC/C	105
M 3	105
M 4	105
M	106
M V	106
MAR	106
MR3	106
MR4	107
M2AI	107
-	107
-	131
U2DI	131
U4DI	131
-	132
U2DO	132
U2DOH	132
UDOH	132
U4DO	132
UDO/VAC	132
-	132
U2RO	132
USW	133
URO	133
-	133
U1CI_DI	133
U2CI/DI	134
U4CI/DI	134
-	134
UAO	134
-	135
UAI	135
UAI	135
UAI/C	135
U2AI	135
U2AI /C	135
U4AI	135
U4AIM	135
UTR	136
U2TR	136
UTC/C	136
U2TC	136
UT3	136
UT3	136
UT4	136
UT4	136
U2T4	137
UAR	137
UR3	137
UR4	137
U2AI	138

U2T4	140
U2TC	141
U2TR	143
U2AR	145
/	145
U920L	145
.....	146
U2SWD	146
U4SWS	146
U4SWSR	146
U2SWDR	146
USWD	147
.....	147
MPRX	147
.....	147
U4DO-G	147

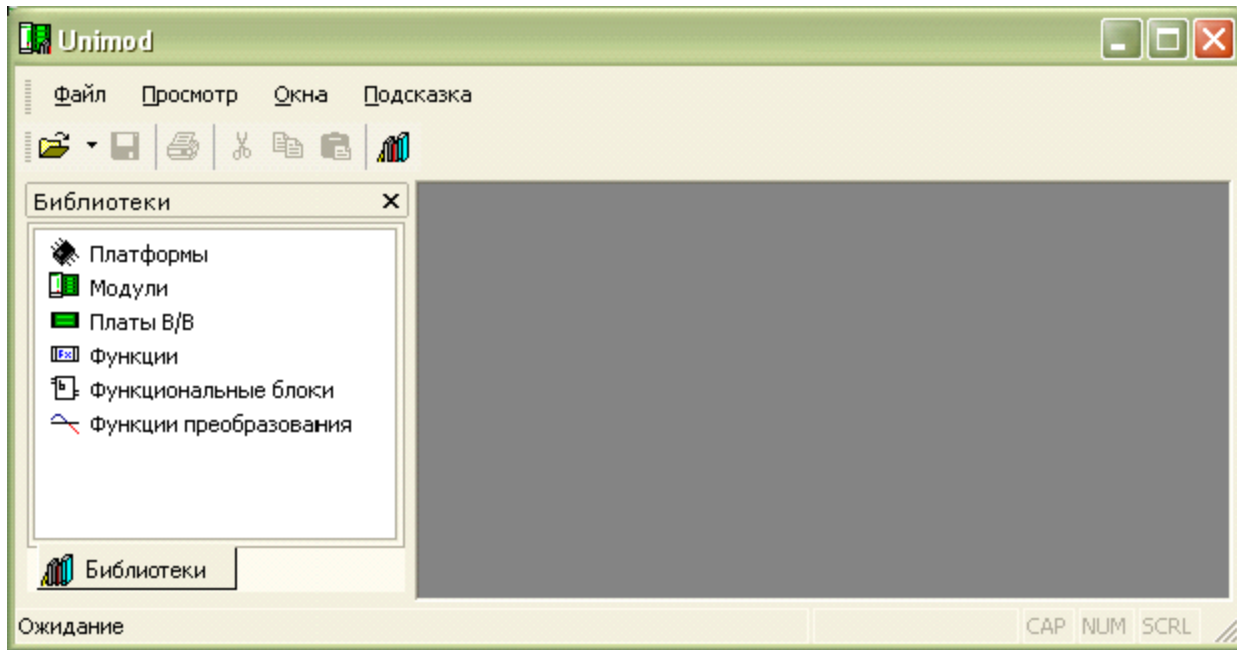
Pro. « Unimod Pro » Unimod

TREI

- «Unimod Pro. »
- «Unimod Pro. »
- «Unimod Pro. »
- «Unimod Pro. M920L»

«LIBRARY»

Library.exe ./Unimod Pro Solution/unimod. Library



« »
()
« » « »
« »

« »

« »

:

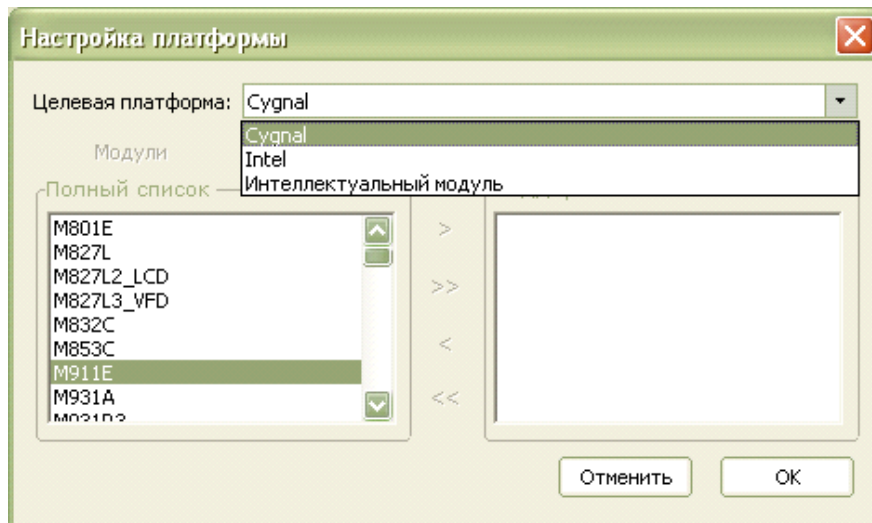
(<>, <>>, <<>, <<<>)

<> -

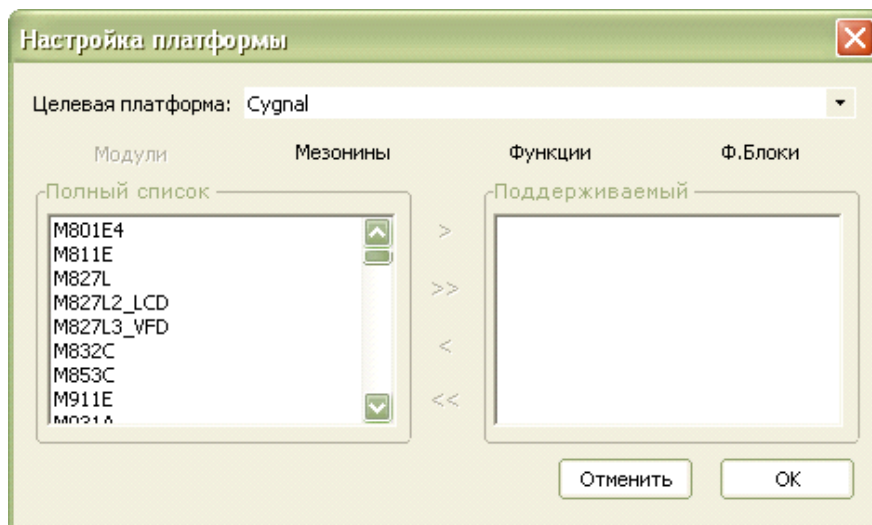
<>> -

<<> -

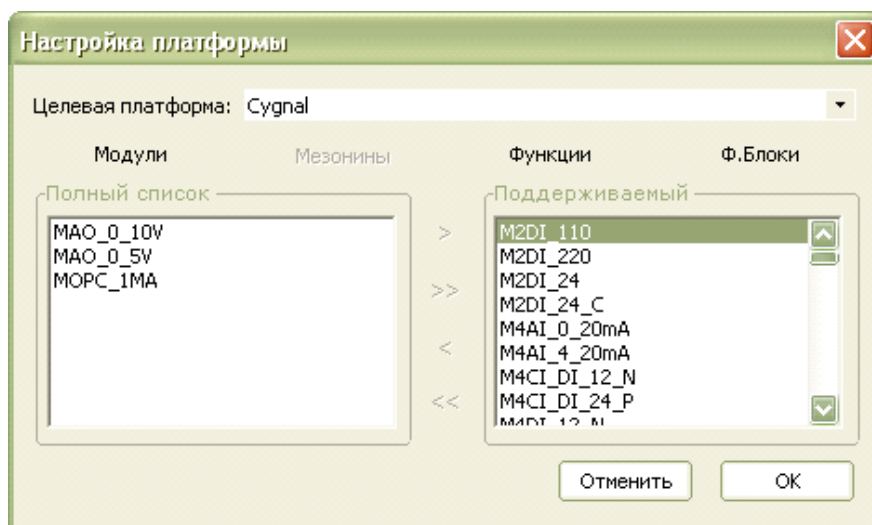
<<<> -



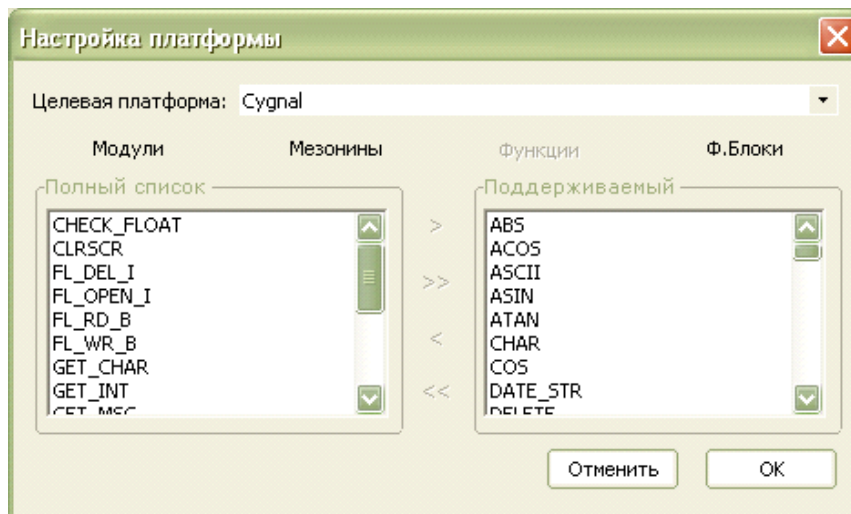
« »



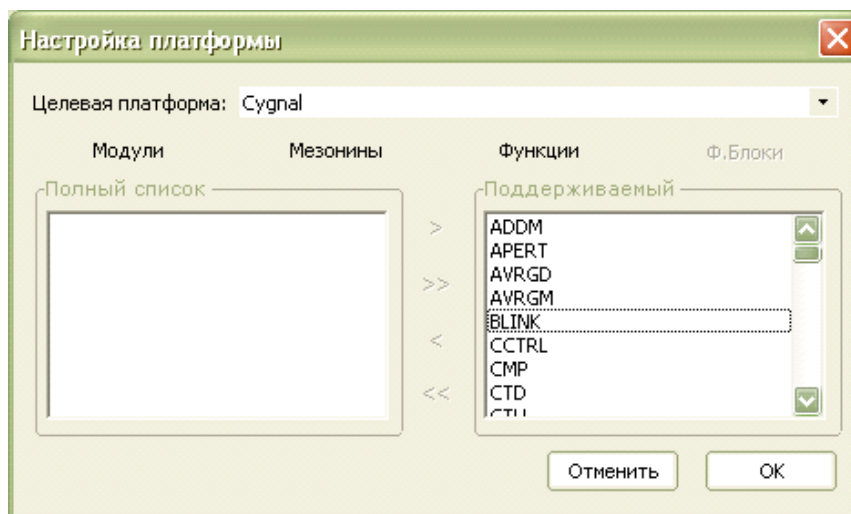
« »



« »

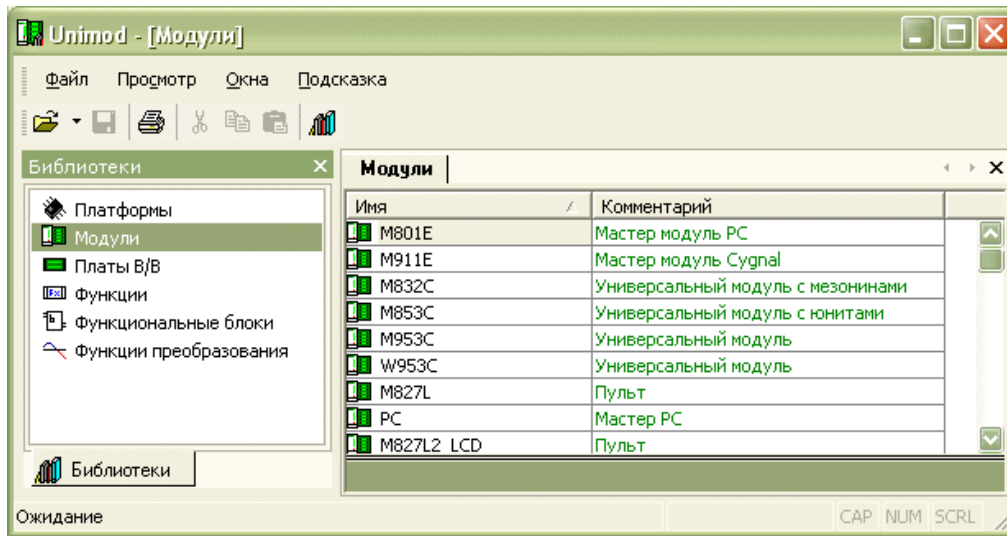


« . »



« »

« »

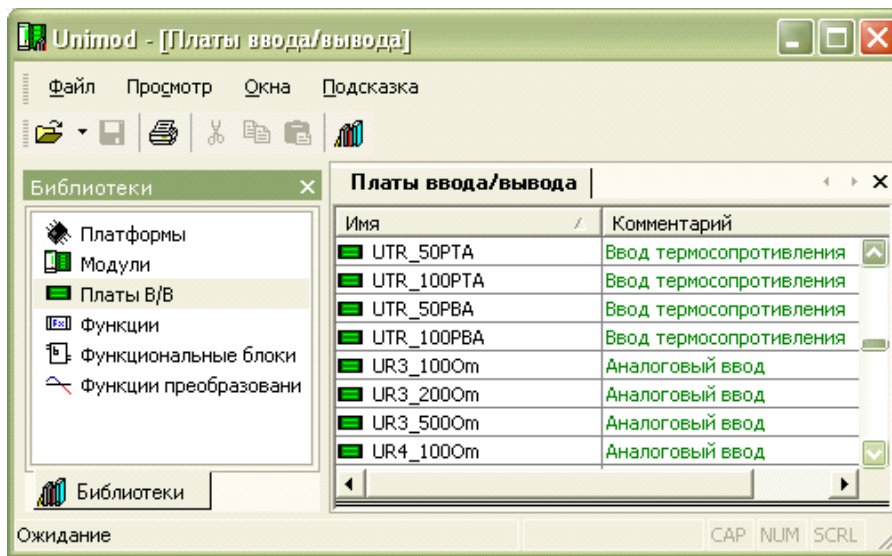


« »

« / »

« / »

/



»

/

«

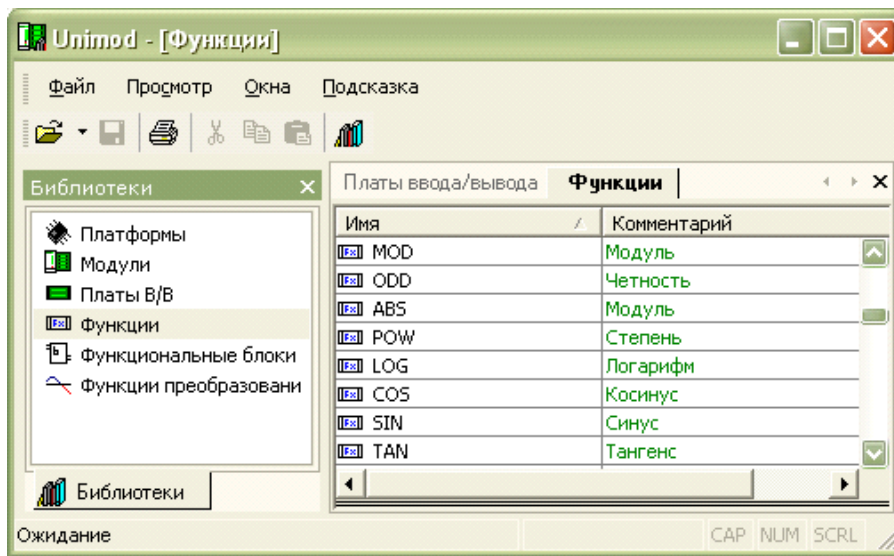
/

«

»

«

»



«Unimod Pro.

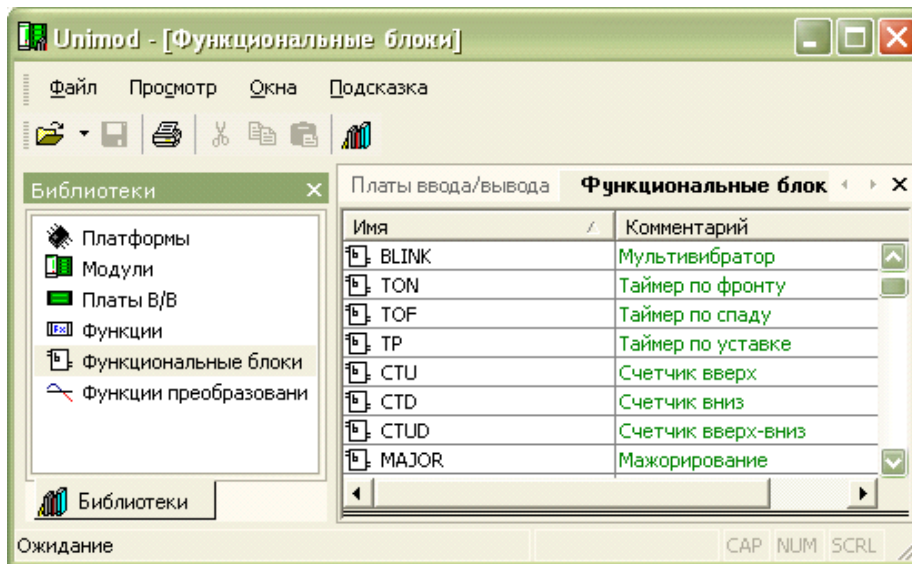
»

«

»

«

»



«Unimod Pro.

».

«

»

«

»

« » « »

	(hex)	
PC	0042	
M841E	0040	PC/104
M911E	0041	Cygnal 05
M811E	0043	Cygnal 04
827L	000C	
M827L2_LCD	000D	
M827L3_VFD	000E	
M831A	1302	8
M831R3	0E02	8 ()
M831T	1402	8 3- 4-
M831V	1602	8 (0..20mA/4..20mA)
M832C	0001	
M833O_S	0B02	8 (1)
M835T	0107	8
M841B	0F02	/
M841O	0502	16 (100mA)
M841R1	0C02	16 ()
M841R2	0D02	16 ()
M842A	1702	16
M843D	0102	16
M843D_S	0202	16

M843F	0402	16 110	220	
M843O	0902	16		(1)
M843O_S	0A02	16		(1),
M845A1	0307	16		5 / 10 / 20
M845A2	0407	16		()
M845A3	0507	16		5 / 10
M845T	0607	16 4		(4)
M851A	1502	4 20mA		0-20mA/4-
M851B	1002		/	
M851O	0602	4	8	"-", 100
M852B	1102		/	
M852O	0702	4	8	"+", 100
M853C	0002			
M854B	1202		/	
M854D	0302	4 (8)	
M854O	0802	4	8	"-", 1 , .
M855A	0207	32	(4 8)	0-20/4-20
XM841B	8F02		/ ,	
XM841O	8502	16		(100mA),
XM843D	8102	16		,
XM843D_S	8202	16		,
M931A	1303	8		
M931R3	0E03	8		()
M931T	1403	8		3- 4-
M931V	1603	8		

M932C	2303	
M932CG	2403	c
M933O_S	0B03	8
M935T	0105	8
M941B	0F03	/
M941O	0503	16
M941R1	0C03	()
M941R2	0D03	()
M942A	2203	16
M943D	0103	16
M943D_S	0203	16
M943F	0403	16 110 220
M943O	0903	16
M943O_S	0A03	16 ,
M945A1	0305	16
M945A2	0405	16 ()
M945A3	0505	16
M945T	0605	16 (4 4)
M951A	1503	4
M951B	1003	/
M951O	0603	4 8 « »
M952B	1103	/
M952O	0703	4 8 « »
M953C	0003	
M953C01	1703	
M953C02	1803	
M953C03	1903	
M953C04	1A03	
M953C05	1B03	
M953C06	1C03	
M953C07	1D03	

M953C08	1E03	
M953C09	1F03	
M953C10	2003	
M953C11	2103	
M954B	1203	/
M954D	0303	4 8 ()
M954O	0803	4 8 « »,
M955A	0205	32 (4 8)
W931A	2C04	8
W931R	2704	16 ()
W931T	2D04	8 3- 4-
W931V	2F04	8
W933O_S	2504	8
W935T	0106	8
W941B	2804	/
W941O	1F04	16
W941R1	0 04	16 ()
W941R2	0D04	16 ()
W942A	3B04	16
W943D	1B04	16
W943D_S	1C04	16
W943F	1E04	16 110 220
W943O	2304	16
W943O_S	2404	16 ,
W945A1	0306	16
W945A2	0406	16 ()
W945A3	0506	16

W945T	0606	16 (4	4)
W951A	2E04	4		
W951B	2904		/	
W951O	2004	4	8	" "
W952B	2A04		/	
W952O	2104	4	8	" "
W953C	0004			
W953C01	3004			
W953C02	3104			
W953C03	3204			
W953C04	3304			
W953C05	3404			
W953C06	3504			
W953C07	3604			
W953C08	3704			
W953C09	3804			
W953C10	3904			
W953C11	3A04			
W954B	2B04		/	
W954D	1D04	4 (8)	
W954O	2204	4	8	" ",
W955A	0206	32 (4	8)

-

- PC

2000/XP. (-)
TCP/IP/UDP.

Windows
Ethernet

RS-485

255

/ .

«Unimod Pro. ».

- **M841E**

- **M841E** IBM PC-
PC/104 Ethernet
TCP/IP/UDP. : TCP/IP: FTP, TELNET
«Unimod Pro. ».

- **M911E**

- **M911E**
100 .

- Ethernet
(Wiznet), (RS-232, RS-485, Bluetooth).
M900 ST-BUS.
- M911E 32- /
«Unimod Pro. ».

- **M811E**

- **M811E** IBM-AT
PC/104. : INTEL
PENTIUM, INTEL PENTIUM II CELERON , AMD Geode GX1.
- M811E (Ethernet, Profibus
)
811 FLASH , SRAM
WATCHDOG
«Unimod Pro. ».

**827L, 827L2_LCD,
827L3_VFD**

- **827L, 827L2_LCD, 827L3_VFD**
: **M911E** (Cygnal 05), **M811E** (
) , **M801E4** (PC/104).
«VisiDesk TREI-5B-05», 2.0.0.0.
Unimod Pro. Unimod Pro.
Unimod Pro
, Unimod Pro
Unimod Pro

Unimod Pro

VisiDesk:
()
, “ ”
, ” ”
, “ ”

M831A

831

8

831 Unimod Pro

UAI_0_5mA	UAI_5mA	UAI_10mA	UAI_0_20mA	UAI_4_20mA
UAI_0_19mV	UAI_19mV	UAI_0_78mV	UAI_78mV	UAI_0_1V
UAI_0_5V	UAI_5V	UAI_0_10V	UAI_10V	UTC_A1
UTC_A2	UTC_A3	UTC_B	UTC_E	UTC_J
UTC_K	UTC_L	UTC_N	UTC_S	UTC_T
UAR_100Om	UAR_200Om	UAR_500Om	UTR_21	UTR_23
UTR_50M	UTR_50MA	UTR_50P	UTR_50PA	UTR_50PB
UTR_50PBA	UTR_50PT	UTR_50PTA	UTR_100M	UTR_100MA
UTR_100N	UTR_100P	UTR_100PA	UTR_100PB	UTR_100PBA
UTR_100PT	UTR_100PTA			

8

M831R3

831R3

8

()

831R3 Unimod Pro

URO_110_10_DT	URO_110_10_DTC	URO_220_05_DT	URO_220_05_DTC	
---------------	----------------	---------------	----------------	--

8 -

M831T831 8
3- 4-

831 Unimod Pro :

UT3_21	UT3_23	UT3_50M	UT3_50MA	UT3_50P
UT3_50PA	UT3_50PB	UT3_50PBA	UT3_100M	UT3_100MA
UT3_100N	UT3_100P	UT3_100PA	UT3_100PB	UT3_100PBA
UT4_21	UT4_23	UT4_50M	UT4_50MA	UT4_50P
UT4_50PA	UT4_50PB	UT4_50PBA	UT4_50PT	UT4_50PTA
UT4_100M	UT4_100MA	UT4_100N	UT4_100P	UT4_100PA
UT4_100PB	UT4_100PBA	UT4_100PT	UT4_100PTA	UR3_100Om
UR3_200Om	UR3_500Om	UR4_200Om	UR4_500Om	UR4_100Om

8 -

M831V

831V 8

831V Unimod Pro :

UAO_E_0_20mA	UAO_E_4_20mA			
--------------	--------------	--	--	--

8 -

/ M832

832

832 Unimod Pro :

M2CI_DI_12	M2CI_DI_24	M2CI_DI_24_C	M2DI_110	M2DI_220
------------	------------	--------------	----------	----------

M2DI_12	M2DI_12_I	M2DI_24	M2DI_24_I	M2DI_24_C
M2DO_20	M2DO_20_	M2DO_01	M4AI_0_20mA	M4AI_4_20mA
M4CI_DI_12_N	M4CI_DI_12_P	M4CI_DI_24_N	M4CI_DI_24_P	M4DI_12_N
M4DI_12_NI	M4DI_12_P	M4DI_12_PI	M4DI_24_N	M4DI_24_NI
M4DI_24_P	M4DI_24_PI	M4DO_01_N	M4DO_01_NQ	M4DO_01_P
M4DO_01_PQ	M4DO_10_NL	M4DO_05_NLD	MAI_0_10V	MAI_0_1V
MAI_0_20mA	MAI_0_5mA	MAI_0_5V	MAI_4_20mA	MAI_5mA
MAI_5V	MAI_10mA	MAI_10V	MAI_0_19mV	MAI_0_78mV
MAI_78mV	MAI_19mV	MAO_E_4_20mA	MAO_E_0_20mA	MAR_100Om
MAR_200Om	MAR_500Om	MCNT_12_D3	MCNT_12_F3	MCNT_12_P3
MCNT_12_T3	MCNT_24_D3	MCNT_24_F3	MCNT_24_P3	MCNT_24_T3
MDO_05_S	MR3_100Om	MR3_200Om	MR3_500Om	MR4_100Om
MR4_200Om	MR4_500Om	MSTB_16D	MSTB_16O	MSTB_32D
MSTB_32O	MT3_100M	MT3_100MA	MT3_100N	MT3_100P
MT3_100PA	MT3_100PB	MT3_100PBA	MT3_21	MT3_23
MT3_50M	MT3_50MA	MT3_50P	MT3_50PA	MT3_50PB
MT3_50PBA	MT4_100M	MT4_100MA	MT4_100N	MT4_100P
MT4_100PA	MT4_100PB	MT4_100PBA	MT4_100PT	MT4_100PTA
MT4_21	MT4_23	MT4_50M	MT4_50MA	MT4_50P
MT4_50PA	MT4_50PB	MT4_50PBA	MT4_50PT	MT4_50PTA
MTC_A1	MTC_A2	MTC_A3	MTC_B	MTC_E
MTC_J	MTC_K	MTC_L	MTC_N	MTC_S
MTC_T	MTR_21	MTR_23	MTR_50M	MTR_50MA
MTR_50P	MTR_50PA	MTR_50PB	MTR_50PBA	MTR_50PT
MTR_50PTA	MTR_100M	MTR_100MA	MTR_100N	MTR_100P
MTR_100PA	MTR_100PB	MTR_100PBA	MTR_100PT	MTR_100PTA

832

M8330_S

8330_S

8

833O_S Unimod Pro :

UDO_10_S	UDO_10_SEx			
----------	------------	--	--	--

8 -

M835T

835 8 .

835 Unimod Pro :

UR3_100Om_M	UR3_200Om_M	UR3_500Om_M	UR4_100Om_M	UR4_200Om_M
UR4_500Om_M	UT3_100M_M	UT3_100MA_M	UT3_100N_M	UT3_100P_M
UT3_100PA_M	UT3_21_M	UT3_23_M	UT3_50M_M	UT3_50MA_M
UT3_50P_M	UT3_50PA_M	UT4_100M_M	UT4_100MA_M	UT4_100N_M
UT4_100P_M	UT4_100PA_M	UT4_100PB_M	UT4_100PBA_M	UT4_21_M
UT4_23_M	UT4_50M_M	UT4_50MA_M	UT4_50P_M	UT4_50PA_M
UT4_50PB_M	UT4_50PBA_M			

8 -

/ M841B

841B 8 , (5A...8D) , (1A...4D) 8

841B Unimod Pro :

:

U2DO_01	U2DO_01_A	U2DO_01_Ex		
---------	-----------	------------	--	--

:

U2DI_12_I	U2DI_12_Ex	U2DI_12_IEx	U2DI_24	U2DI_24_I
U2DI_24_C	U2DI_24_CEx	U2DI_24_Ex	U2DI_24_IC	U2DI_24_ICEx
U2DI_24_IEx	U2CI_DI_12	U2CI_DI_24	U2CI_DI_24_C	

8 -

M841O

 841 16

841 Unimod Pro :

U2DO_01	U2DO_01_A	U2DO_01_Ex		
---------	-----------	------------	--	--

 16 -
M841R1

841R1 16 ()

841R1 Unimod Pro :

U2RO_110_10_NO	U2RO_110_10_NOC	U2RO_110_50_NO		
U2RO_220_05_NO	U2RO_220_05_NOC	U2RO_220_50_NO		

 16 -
M841R2

 841R2 16 ()

841R2 Unimod Pro :

U2RO_110_10_NC	U2RO_110_10_NCC	U2RO_220_05_NC	U2RO_220_05_NCC	
----------------	-----------------	----------------	-----------------	--

 16 -
M843D

 843D 16

843D Unimod Pro :

U2DI_12	U2DI_12_I	U2DI_12_Ex	U2DI_12_IEx	U2CI_DI_12
U2DI_24	U2DI_24_I	U2DI_24_Ex	U2DI_24_IEx	U2CI_DI_24

 16 -

M842A

842 16

842 Unimod Pro :

U2AI_0_20mA	U2AI_4_20mA			
-------------	-------------	--	--	--

16 -
M843D_S

843D_S 16

843D_S Unimod Pro :

U2CI_DI_24	U2CI_DI_24_C	U2DI_24	U2DI_24_ICEx	U2DI_24_CEx
U2DI_24_C	U2DI_24_IC	U2DI_24_Ex	U2DI_24_I	U2DI_24_IEx

16 -
M843F

843F 16 /

110 220

843F Unimod Pro :

U2DI_110	U2DI_220			
----------	----------	--	--	--

16 -
M843O

843O 16

843O Unimod Pro :

U2DO_10	U2DO_10_Ex			
---------	------------	--	--	--

16

-

M8430_S**8430_S**

16

8430_S Unimod Pro

:

U2DO_10_	U2DO_10_ Ex			
----------	-------------	--	--	--

16

-

M845A1**845A1**

16

845A1 Unimod Pro

:

U2AI_0_20mA_M	U2AI_0_5mA_M	U2AI_10mA_M	U2AI_4_20mA_M	U2AI_5mA_M
---------------	--------------	-------------	---------------	------------

16

-

M845A2**845A2**

16

()

845A2 Unimod Pro

:

U2AI_0_19mV_M	U2AI_0_78mV_M	U2AI_19mV_M	U2AI_78mV_M	U2AR_100Om_M
U2AR_200Om_M	U2AR_500Om_M	U2TC_A1_M	U2TC_A2_M	U2TC_A3_M
U2TC_B_M	U2TC_E_M	U2TC_J_M	U2TC_K_M	U2TC_L_M
U2TC_N_M	U2TC_S_M	U2TC_T_M	U2TR_100M_M	U2TR_100MA_M
U2TR_100N_M	U2TR_100P_M	U2TR_100PA_M	U2TR_100PB_M	U2TR_100PBA_M
U2TR_21_M	U2TR_23_M	U2TR_50M_M	U2TR_50MA_M	U2TR_50P_M
U2TR_50PA_M	U2TR_50PB_M	U2TR_50PBA_M		

16

-

M845A3

845A3 16

845A3 Unimod Pro :

U2AI_0_10V_M	U2AI_0_5V_M	U2AI_10V_M	U2AI_5V_M	
--------------	-------------	------------	-----------	--

16 -
M845T

845 16 (4 4
).

845 Unimod Pro :

U2T4_100M_M	U2T4_100MA_M	U2T4_21_M		
U2T4_50M_M	U2T4_50MA_M	U2T4_23_M		

16 -
M851A

851A 4 8

851A Unimod Pro :

U4AI_0_20mA	U4AI_4_20mA			
-------------	-------------	--	--	--

32 -
/ **M851B**

851B 2 8 « »,
(1A...4D) 2 8 (),
(5A...8D)

851B Unimod Pro :

:

U4DO_01_N	U4DO_01_NA	U4DO_01_NQ	U4DO_01_NQA	
-----------	------------	------------	-------------	--

:

U4DI_12_N	U4DI_12_NI	U4DI_12_P	U4DI_12_PI	U4CI_DI_12_N
U4DI_24_N	U4DI_24_NI	U4DI_24_P	U4DI_24_PI	U4CI_DI_24_N
U4CI_DI_12_P	U4CI_DI_24_P			

1
2
...
16
17
18
...
32

M851O

851O 4 8 « »

851O Unimod Pro :

U4DO_01_N	U4DO_01_NA	U4DO_01_NQ	U4DO_01_NQA	
-----------	------------	------------	-------------	--

1
2
...
32

/ M852B

852B 2 8 « »,
(1A...4D) 2 8 (),
(5A...8D)

852B Unimod Pro :

:

U4DO_01_P	U4DO_01_P	U4DO_01_PQ	U4DO_01_PQA	
-----------	-----------	------------	-------------	--

:

U4DI_12_N	U4DI_12_NI	U4DI_12_P	U4DI_12_PI	U4CI_DI_12_N
U4DI_24_N	U4DI_24_NI	U4DI_24_P	U4DI_24_PI	U4CI_DI_24_N
U4CI_DI_12_P	U4CI_DI_24_P			

1
2
...
16
17
18
...
32

/ **M8520**

8520

4

8

«

»

8520 Unimod Pro

:

U4DO_01_P	U4DO_01_PA	U4DO_01_PQ	U4DO_01_PQA	
-----------	------------	------------	-------------	--

32

-

/ **M853**

853

853 Unimod Pro

:

U2CI_DI_12	U2CI_DI_24	U2CI_DI_24_C	U2DI_110	U2DI_220
U2DI_12	U2DI_12_Ex	U2DI_12_I	U2DI_12_IEx	U2DI_24
U2DI_24_I	U2DI_24_C	U2DI_24_CEx	U2DI_24_Ex	U2DI_24_IC
U2DI_24_ICEx	U2DI_24_IEx	U2DO_01	U2DO_01_A	U2DO_01_Ex
U2DO_10	U2DO_10_	U2DO_10_ Ex	U2DO_10_Ex	U2RO_110_10_NC
U2RO_110_10_NCC	U2RO_110_10_N O	U2RO_110_10_NOC	U2RO_110_50_NO	U2RO_220_05_NC
U2RO_220_05_NCC	U2RO_220_05_N	U2RO_220_05_NOC	U2RO_220_50_NO	URO_110_10_DT

	O			
URO_110_10_DTC	URO_220_05_DT	URO_220_05_DTC	U2SWD	U2SWDR
U4SWS	U4SWSR	USWD	U4AI_0_20mA	U4AI_4_20mA
U4CI_DI_12_N	U4CI_DI_12_P	U4CI_DI_24_N	U4CI_DI_24_P	U4DI_12_N
U4DI_12_NI	U4DI_12_P	U4DI_12_PI	U4DI_24_N	U4DI_24_NI
U4DI_24_P	U4DI_24_PI	U4DO_01_N	U4DO_01_NA	U4DO_01_NQ
U4DO_01_NQA	U4DO_01_P	U4DO_01_PA	U4DO_01_PQ	U4DO_01_PQA
U4DO_10_NL	U4DO_10_NLD	UAI_0_10V	UAI_0_1V	UAI_0_20mA
UAI_0_5mA	UAI_0_5V	UAI_4_20mA	UAI_5mA	UAI_5V
UAI_10mA	UAI_10V	UAI_0_19mV	UAI_0_78mV	UAI_19mV
UAI_78mV	UAO_E_0_20mA	UAO_E_4_20mA	UAR_100Om	UAR_200Om
UAR_500Om	UDO_10_S	UDO_10_SEx	UDO_110VAC	UDO_220VAC
UR3_100Om	UR3_200Om	UR3_500Om	UR4_100Om	UR4_200Om
UR4_500Om	U920L	URO_110_10_DT	URO_110_10_DTC	URO_220_05_DT
URO_220_05_DTC	UT3_100M	UT3_100MA	UT3_100N	UT3_100P
UT3_100PA	UT3_100PB	UT3_100PBA	UT3_21	UT3_23
UT3_50M	UT3_50MA	UT3_50P	UT3_50PA	UT3_50PB
UT3_50PBA	UT4_100M	UT4_100MA	UT4_100N	UT4_100P
UT4_100PA	UT4_100PB	UT4_100PBA	UT4_100PT	UT4_100PTA
UT4_21	UT4_23	UT4_50M	UT4_50MA	UT4_50P
UT4_50PA	UT4_50PB	UT4_50PBA	UT4_50PT	UT4_50PTA
UTC_A1	UTC_A2	UTC_A3	UTC_B	UTC_E
UTC_J	UTC_K	UTC_L	UTC_N	UTC_S
UTC_T	UTR_21	UTR_23	UTR_50M	UTR_50MA
UTR_50P	UTR_50PA	UTR_50PB	UTR_50PBA	UTR_50PT
UTR_50PTA	UTR_100M	UTR_100MA	UTR_100N	UTR_100P
UTR_100PA	UTR_100PB	UTR_100PBA	UTR_100PT	UTR_100PTA

853

/

/ M854B

854B

2

8

, (1A...4D) 2

8

« »,

(), (5A...8D)

854B Unimod Pro :

:

U4DO_10_NL	U4DO_10_NLD			
------------	-------------	--	--	--

:

U4DI_12_N	U4DI_12_NI	U4DI_12_P	U4DI_12_PI	U4CI_DI_12_N
U4DI_24_N	U4DI_24_NI	U4DI_24_P	U4DI_24_PI	U4CI_DI_24_N
U4CI_DI_12_P	U4CI_DI_24_P			

- 1
- 2
- ...
- 16
- 17
- 18
- ...
- 32

M854D

854D 4 8 ()

854D Unimod Pro :

U4DI_12_N	U4DI_12_NI	U4DI_12_P	U4DI_12_PI	U4CI_DI_12_P
U4DI_24_N	U4DI_24_NI	U4DI_24_P	U4DI_24_PI	U4CI_DI_24_P
U4CI_DI_12_N	U4CI_DI_24_N			

32 -

M854O

854O 4 8 « »

854O Unimod Pro :

U4DO_10_NL	U4DO_10_NLD			
------------	-------------	--	--	--

32 -

M855A

855A 4 8

855A Unimod Pro :

U4AI_0_20mA_M	U4AI_4_20mA_M			
---------------	---------------	--	--	--

32 -

/ XM841B

X 841B 8 , (1A...4D) 8
, (5A...8D),

X 841B Unimod Pro :

:

U2DO_01	U2DO_01_A	U2DO_01_Ex		
---------	-----------	------------	--	--

:

U2DI_12_I	U2DI_12_Ex	U2DI_12_IEx	U2DI_24	U2DI_24_I
U2DI_24_C	U2DI_24_CEx	U2DI_24_Ex	U2DI_24_IC	U2DI_24_ICEx
U2DI_24_IEx	U2CI_DI_12	U2CI_DI_24	U2CI_DI_24_C	

XM841O

X 841 16 ,

X 841 Unimod Pro :

U2DO_01	U2DO_01_A	U2DO_01_Ex		
---------	-----------	------------	--	--

16 -

XM843D

X 843D 16

X 843D Unimod Pro :

U2DI_12	U2DI_12_I	U2DI_12_Ex	U2DI_12_IEx	U2CI_DI_12
U2DI_24	U2DI_24_I	U2DI_24_Ex	U2DI_24_IEx	U2CI_DI_24

16 -

XM843D_S

X 843D_S 16

X 843D_S Unimod Pro :

U2CI_DI_24	U2CI_DI_24_C	U2DI_24	U2DI_24_IEx	U2DI_24_CEx
U2DI_24_C	U2DI_24_IC	U2DI_24_Ex	U2DI_24_I	U2DI_24_IEx

16 -

931

931 8

931 Unimod Pro :

UAI_0_5mA	UAI_5mA	UAI_10mA	UAI_0_20mA	UAI_4_20mA
UAI_0_19mV	UAI_19mV	UAI_0_78mV	UAI_78mV	UAI_0_1V
UAI_0_5V	UAI_5V	UAI_0_10V	UAI_10V	UTC_A1
UTC_A2	UTC_A3	UTC_B	UTC_E	UTC_J
UTC_K	UTC_L	UTC_N	UTC_S	UTC_T
UAR_100Om	UAR_200Om	UAR_500Om	UTR_21	UTR_23
UTR_50M	UTR_50MA	UTR_50P	UTR_50PA	UTR_50PB
UTR_50PBA	UTR_50PT	UTR_50PTA	UTR_100M	UTR_100MA

UTR_100N	UTR_100P	UTR_100PA	UTR_100PB	UTR_100PBA
UTR_100PT	UTR_100PTA			

8 -

931R3

931R3 8 ().

931R3 Unimod Pro :

URO_110_10_DT	URO_110_10_DTC	URO_220_05_DT	URO_220_05_DTC	
---------------	----------------	---------------	----------------	--

8 -

931

931 8
3- 4- .

931 Unimod Pro :

UT3_21	UT3_23	UT3_50M	UT3_50MA	UT3_50P
UT3_50PA	UT3_50PB	UT3_50PBA	UT3_100M	UT3_100MA
UT3_100N	UT3_100P	UT3_100PA	UT3_100PB	UT3_100PBA
UT4_21	UT4_23	UT4_50M	UT4_50MA	UT4_50P
UT4_50PA	UT4_50PB	UT4_50PBA	UT4_50PT	UT4_50PTA
UT4_100M	UT4_100MA	UT4_100N	UT4_100P	UT4_100PA
UT4_100PB	UT4_100PBA	UT4_100PT	UT4_100PTA	UR3_100Om
UR3_200Om	UR3_500Om	UR4_200Om	UR4_500Om	UR4_100Om

8 -

931V

931V 8

931V Unimod Pro :

UAO_E_0_20mA	UAO_E_4_20mA			
--------------	--------------	--	--	--

8 -

932

932

935

:

932 G

932 G

932 .

U4DO-G.

9330_S

9330_S

8

9330_S Unimod Pro

:

UDO_10_S	UDO_10_SEx			
----------	------------	--	--	--

8 -

935

935

8

935 Unimod Pro

:

UR3_100Om_M	UR3_200Om_M	UR3_500Om_M	UR4_100Om_M	UR4_200Om_M
UR4_500Om_M	UT3_100M_M	UT3_100MA_M	UT3_100N_M	UT3_100P_M
UT3_100PA_M	UT3_21_M	UT3_23_M	UT3_50M_M	UT3_50MA_M
UT3_50P_M	UT3_50PA_M	UT4_100M_M	UT4_100MA_M	UT4_100N_M
UT4_100P_M	UT4_100PA_M	UT4_100PB_M	UT4_100PBA_M	UT4_21_M
UT4_23_M	UT4_50M_M	UT4_50MA_M	UT4_50P_M	UT4_50PA_M

UT4_50PB_M	UT4_50PBA_M			
------------	-------------	--	--	--

8 -

HART

941A

941A 16 , (1A...8B)
HART, 16 .

941A Unimod Pro :

U2AI_4_20mA				
-------------	--	--	--	--

16

HART

/ **941B**

941B 8 , (1A...4D) 8
(5A...8D)

941B Unimod Pro :

:

U2DO_01	U2DO_01_A	U2DO_01_Ex		
---------	-----------	------------	--	--

:

U2DI_12_I	U2DI_12_Ex	U2DI_12_IEx	U2DI_24	U2DI_24_I
U2DI_24_C	U2DI_24_CEx	U2DI_24_Ex	U2DI_24_IC	U2DI_24_ICEx
U2DI_24_IEx	U2CI_DI_12	U2CI_DI_24	U2CI_DI_24_C	

- 1
- 2
- ...
- 8
- 9
- 10
- ...
- 16

941

941 16

941 Unimod Pro :

U2DO_01	U2DO_01_A	U2DO_01_Ex		
---------	-----------	------------	--	--

16 -

941R1

941R1 16 ()

941R1 Unimod Pro :

U2RO_110_10_NO	U2RO_110_10_NOC	U2RO_110_50_NO		
U2RO_220_05_NO	U2RO_220_05_NOC	U2RO_220_50_NO		

16 -

941R2

941R2 16 ()

941R2 Unimod Pro :

U2RO_110_10_NC	U2RO_110_10_NCC	U2RO_220_05_NC	U2RO_220_05_NCC	
----------------	-----------------	----------------	-----------------	--

16 -

942

942A 16

942A Unimod Pro :

U2AI_0_20mA	U2AI_4_20mA			
-------------	-------------	--	--	--

16 -

943D

943D 16

943D Unimod Pro :

U2DI_12	U2DI_12_I	U2DI_12_Ex	U2DI_12_IEx	U2CI_DI_12
U2DI_24	U2DI_24_I	U2DI_24_Ex	U2DI_24_IEx	U2CI_DI_24

16 -
943D_S

943D_S 16

943D_S Unimod Pro :

U2CI_DI_24	U2CI_DI_24_C	U2DI_24	U2DI_24_IEx	U2DI_24_CEx
U2DI_24_C	U2DI_24_IC	U2DI_24_Ex	U2DI_24_I	U2DI_24_IEx

16 -
943F

943F 16 /
110 220

943F Unimod Pro :

U2DI_110	U2DI_220			
----------	----------	--	--	--

16 -
943O

943O 16

943O Unimod Pro :

U2DO_10	U2DO_10_ Ex			
---------	-------------	--	--	--

16

-

9430_S**9430_S** 16**9430_S** Unimod Pro :

U2DO_10_	U2DO_10_ Ex			
----------	-------------	--	--	--

16

-

945A1**945A1** 16**945A1** Unimod Pro :

U2AI_0_20mA_M	U2AI_0_5mA_M	U2AI_10mA_M	U2AI_4_20mA_M	U2AI_5mA_M
---------------	--------------	-------------	---------------	------------

16

-

945A2**945A2** 16

()

945A2 Unimod Pro :

U2AI_0_19mV_M	U2AI_0_78mV_M	U2AI_19mV_M	U2AI_78mV_M	U2AR_100Om_M
U2AR_200Om_M	U2AR_500Om_M	U2TC_A1_M	U2TC_A2_M	U2TC_A3_M
U2TC_B_M	U2TC_E_M	U2TC_J_M	U2TC_K_M	U2TC_L_M
U2TC_N_M	U2TC_S_M	U2TC_T_M	U2TR_100M_M	U2TR_100MA_M
U2TR_100N_M	U2TR_100P_M	U2TR_100PA_M	U2TR_100PB_M	U2TR_100PBA_M
U2TR_21_M	U2TR_23_M	U2TR_50M_M	U2TR_50MA_M	U2TR_50P_M
U2TR_50PA_M	U2TR_50PB_M	U2TR_50PBA_M		

16

-

945A3**945A3**

16

945A3 Unimod Pro

:

U2AI_0_10V_M	U2AI_0_5V_M	U2AI_10V_M	U2AI_5V_M	
--------------	-------------	------------	-----------	--

16

-

945**945**

16

).

(4

4

945 Unimod Pro

:

U2T4_100M_M	U2T4_100MA_M	U2T4_21_M		
U2T4_50M_M	U2T4_50MA_M	U2T4_23_M		

16

-

951A**951A**

4

8

951A Unimod Pro

:

U4AI_0_20mA	U4AI_4_20mA			
-------------	-------------	--	--	--

32

-

/

951B

951B 2 8 « »,
 (1A...4D) 2 8 (),
 (5A...8D)

951B Unimod Pro :

:

U4DO_01_N	U4DO_01_NA	U4DO_01_NQ	U4DO_01_NQA	
-----------	------------	------------	-------------	--

:

U4DI_12_N	U4DI_12_NI	U4DI_12_P	U4DI_12_PI	U4CI_DI_12_N
U4DI_24_N	U4DI_24_NI	U4DI_24_P	U4DI_24_PI	U4CI_DI_24_N
U4CI_DI_12_P	U4CI_DI_24_P			

- 1
- 2
- ...
- 16
- 17
- 18
- ...
- 32

951O

951O 4 8 « »

951O Unimod Pro :

U4DO_01_N	U4DO_01_NA	U4DO_01_NQ	U4DO_01_NQA	
-----------	------------	------------	-------------	--

32 -

/ **952B**

952B 2 8 « »,
 (1A...4D) 2 8 (),
 (5A...8D)

952B Unimod Pro :

:

U4DO_01_P	U4DO_01_P	U4DO_01_PQ	U4DO_01_PQA	
-----------	-----------	------------	-------------	--

:

U4DI_12_N	U4DI_12_NI	U4DI_12_P	U4DI_12_PI	U4CI_DI_12_N
U4DI_24_N	U4DI_24_NI	U4DI_24_P	U4DI_24_PI	U4CI_DI_24_N
U4CI_DI_12_P	U4CI_DI_24_P			

1
2
...
16
17
18
...
32

9520**9520**

4

8

«

»

9520 Unimod Pro

:

U4DO_01_P	U4DO_01_PA	U4DO_01_PQ	U4DO_01_PQA	
-----------	------------	------------	-------------	--

32

-

/

953**953****953** Unimod Pro

:

U2CI_DI_12	U2CI_DI_24	U2CI_DI_24_C	U2DI_110	U2DI_220
U2DI_12	U2DI_12_Ex	U2DI_12_I	U2DI_12_IEx	U2DI_24
U2DI_24_I	U2DI_24_C	U2DI_24_CEx	U2DI_24_Ex	U2DI_24_IC
U2DI_24_IEx	U2DI_24_IEx	U2DO_01	U2DO_01_A	U2DO_01_Ex
U2DO_10	U2DO_10_	U2DO_10_ Ex	U2DO_10_Ex	U2RO_110_10_NC
U2RO_110_10_NCC	U2RO_110_10_NO	U2RO_110_10_NO C	U2RO_110_50_NO	U2RO_220_05_NC

U2RO_220_05_NCC	U2RO_220_05_NO	U2RO_220_05_NO C	U2RO_220_50_NO	URO_110_10_DT
URO_110_10_DTC	URO_220_05_DT	URO_220_05_DTC	U2SWD	U2SWDR
U4SWS	U4SWSR	USWD	U4AI_0_20mA	U4AI_4_20mA
U4CI_DI_12_N	U4CI_DI_12_P	U4CI_DI_24_N	U4CI_DI_24_P	U4DI_12_N
U4DI_12_NI	U4DI_12_P	U4DI_12_PI	U4DI_24_N	U4DI_24_NI
U4DI_24_P	U4DI_24_PI	U4DO_01_N	U4DO_01_NA	U4DO_01_NQ
U4DO_01_NQA	U4DO_01_P	U4DO_01_PA	U4DO_01_PQ	U4DO_01_PQA
U4DO_10_NL	U4DO_10_NLD	UAI_0_10V	UAI_0_1V	UAI_0_20mA
UAI_0_5mA	UAI_0_5V	UAI_4_20mA	UAI_5mA	UAI_5V
UAI_10mA	UAI_10V	UAI_0_19mV	UAI_0_78mV	UAI_19mV
UAI_78mV	UAO_E_0_20mA	UAO_E_4_20mA	UAR_100Om	UAR_200Om
UAR_500Om	UDO_10_S	UDO_10_SEx	UDO_110VAC	UDO_220VAC
UR3_100Om	UR3_200Om	UR3_500Om	UR4_100Om	UR4_200Om
UR4_500Om	U920L	URO_110_10_DT	URO_110_10_DTC	URO_220_05_DT
URO_220_05_DTC	UT3_100M	UT3_100MA	UT3_100N	UT3_100P
UT3_100PA	UT3_100PB	UT3_100PBA	UT3_21	UT3_23
UT3_50M	UT3_50MA	UT3_50P	UT3_50PA	UT3_50PB
UT3_50PBA	UT4_100M	UT4_100MA	UT4_100N	UT4_100P
UT4_100PA	UT4_100PB	UT4_100PBA	UT4_100PT	UT4_100PTA
UT4_21	UT4_23	UT4_50M	UT4_50MA	UT4_50P
UT4_50PA	UT4_50PB	UT4_50PBA	UT4_50PT	UT4_50PTA
UTC_A1	UTC_A2	UTC_A3	UTC_B	UTC_E
UTC_J	UTC_K	UTC_L	UTC_N	UTC_S
UTC_T	UTR_21	UTR_23	UTR_50M	UTR_50MA
UTR_50P	UTR_50PA	UTR_50PB	UTR_50PBA	UTR_50PT
UTR_50PTA	UTR_100M	UTR_100MA	UTR_100N	UTR_100P
UTR_100PA	UTR_100PB	UTR_100PBA	UTR_100PT	UTR_100PTA

953

/

953 01

953 01

:

4 , (1 ...1D)
 12 « », (2A...4D)
 16 « », (5A...8D)

953 01 Unimod Pro :

U4AI_0_20mA	U4AI_4_20mA			
-------------	-------------	--	--	--

U4DO_01_N	U4DO_01_NA	U4DO_01_NQ	U4DO_01_NQA	
-----------	------------	------------	-------------	--

U4DI_12_P	U4DI_12_PI	U4CI_DI_12_P		
U4DI_24_P	U4DI_24_PI	U4CI_DI_24_P		

- 1
- 2
- ...
- 4
- 5
- 6
- ...
- 15
- 16
- 17
- ...
- 32

953 02

953 02 :

8 « », (1A...2D)
 6 , (3 ...8D)

953 02 Unimod Pro :

U4DO_01_N	U4DO_01_NA	U4DO_01_NQ	U4DO_01_NQA	
-----------	------------	------------	-------------	--

UAI_0_10V	UAI_0_1V	UAI_0_20mA	UAI_0_5mA	UAI_0_5V
UAI_4_20mA	UAI_5mA	UAI_5V	UAI_10mA	UAI_10V

UAI_0_19mV	UAI_0_78mV	UAI_19mV	UAI_78mV	UAR_100Om
UAR_200Om	UAR_500Om	UTC_A1	UTC_A2	UTC_A3
UTC_B	UTC_E	UTC_J	UTC_K	UTC_L
UTC_N	UTC_S	UTC_T	UTR_21	UTR_23
UTR_50M	UTR_50MA	UTR_50P	UTR_50PA	UTR_50PB
UTR_50PBA	UTR_50PT	UTR_50PTA	UTR_100M	UTR_100MA
UTR_100N	UTR_100P	UTR_100PA	UTR_100PB	UTR_100PBA
UTR_100PT	UTR_100PTA			

1
2
...
8
9
10
...
14

953 03

953 03 :

8
6

« »,

(1A...2D)

T4,

(3 ...8D)

953 03 Unimod Pro :

U4DO_01_N	U4DO_01_NA	U4DO_01_NQ	U4DO_01_NQA	
-----------	------------	------------	-------------	--

T4

UT4_100M	UT4_100MA	UT4_100N	UT4_100P	UT4_100PA
UT4_100PB	UT4_100PBA	UT4_100PT	UT4_100PTA	UT4_21
UT4_23	UT4_50M	UT4_50MA	UT4_50P	UT4_50PA
UT4_50PB	UT4_50PBA	UT4_50PT	UT4_50PTA	UR3_100Om
UR3_200Om	UR3_500Om	UR4_100Om	UR4_200Om	UR4_500Om
UT3_100M	UT3_100MA	UT3_100N	UT3_100P	UT3_100PA
UT3_100PB	UT3_100PBA	UT3_21	UT3_23	UT3_50M
UT3_50MA	UT3_50P	UT3_50PA	UT3_50PB	UT3_50PBA

1
2
...
8
9
10
...
14

953 04**953 04** :

4 (1 ...1D)
2 , (2A...3D)
2 T4, (4A...5D)
8 « », (6A...7D)
4 « », (8A...8D)

953 04 Unimod Pro :

U4AI_4_20mA	U4AI_0_20mA			
-------------	-------------	--	--	--

UAI_0_10V	UAI_0_1V	UAI_0_20mA	UAI_0_5mA	UAI_0_5V
UAI_4_20mA	UAI_5mA	UAI_5V	UAI_10mA	UAI_10V
UAI_0_19mV	UAI_0_78mV	UAI_19mV	UAI_78mV	UAR_100Om
UAR_200Om	UAR_500Om	UTC_A1	UTC_A2	UTC_A3
UTC_B	UTC_E	UTC_J	UTC_K	UTC_L
UTC_N	UTC_S	UTC_T	UTR_21	UTR_23
UTR_50M	UTR_50MA	UTR_50P	UTR_50PA	UTR_50PB
UTR_50PBA	UTR_50PT	UTR_50PTA	UTR_100M	UTR_100MA
UTR_100N	UTR_100P	UTR_100PA	UTR_100PB	UTR_100PBA
UTR_100PT	UTR_100PTA			

T4

UT4_100M	UT4_100MA	UT4_100N	UT4_100P	UT4_100PA
UT4_100PB	UT4_100PBA	UT4_100PT	UT4_100PTA	UT4_21
UT4_23	UT4_50M	UT4_50MA	UT4_50P	UT4_50PA
UT4_50PB	UT4_50PBA	UT4_50PT	UT4_50PTA	UR3_100Om

UR3_200Om	UR3_500Om	UR4_100Om	UR4_200Om	UR4_500Om
UT3_100M	UT3_100MA	UT3_100N	UT3_100P	UT3_100PA
UT3_100PB	UT3_100PBA	UT3_21	UT3_23	UT3_50M
UT3_50MA	UT3_50P	UT3_50PA	UT3_50PB	UT3_50PBA

U4DI_24_P	U4CI_DI_24_P			
-----------	--------------	--	--	--

U4DO_01_N				
-----------	--	--	--	--

1
2
...
8
9
10
...
16
17
18
...
20

953 05

953 05 :

4 , (1 ...1D)
2 T4, (2A...3D)
20 « », (4A...8D)

953 05 Unimod Pro :

U4AI_4_20mA	U4AI_0_20mA			
-------------	-------------	--	--	--

T4

UT4_100M	UT4_100MA	UT4_100N	UT4_100P	UT4_100PA
UT4_100PB	UT4_100PBA	UT4_100PT	UT4_100PTA	UT4_21
UT4_23	UT4_50M	UT4_50MA	UT4_50P	UT4_50PA
UT4_50PB	UT4_50PBA	UT4_50PT	UT4_50PTA	UR3_100Om

UR3_200Om	UR3_500Om	UR4_100Om	UR4_200Om	UR4_500Om
UT3_100M	UT3_100MA	UT3_100N	UT3_100P	UT3_100PA
UT3_100PB	UT3_100PBA	UT3_21	UT3_23	UT3_50M
UT3_50MA	UT3_50P	UT3_50PA	UT3_50PB	UT3_50PBA

U4DO_01_N				
-----------	--	--	--	--

1
2
...
6
7
8
...
26

953 06

953 06 :

28
4 « », (1 ...7D)
(8A...8D)

953 06 Unimod Pro :

U4AI_4_20mA	U4AI_0_20mA			
-------------	-------------	--	--	--

U4DO_01_N				
-----------	--	--	--	--

1
2
...
28
29
30
...
32

953 07

953 07 :

4 , (1 ...4D)
 1 T4, (5A...5D)
 2 (6A...6D)
 2 (), (7A...8D)

953 07 Unimod Pro :

UAI_0_5mA	UAI_4_20mA			
-----------	------------	--	--	--

T4

UT4_100M	UT4_100MA	UT4_100N	UT4_100P	UT4_100PA
UT4_100PB	UT4_100PBA	UT4_100PT	UT4_100PTA	UT4_21
UT4_23	UT4_50M	UT4_50MA	UT4_50P	UT4_50PA
UT4_50PB	UT4_50PBA	UT4_50PT	UT4_50PTA	UR3_100Om
UR3_200Om	UR3_500Om	UR4_100Om	UR4_200Om	UR4_500Om
UT3_100M	UT3_100MA	UT3_100N	UT3_100P	UT3_100PA
UT3_100PB	UT3_100PBA	UT3_21	UT3_23	UT3_50M
UT3_50MA	UT3_50P	UT3_50PA	UT3_50PB	UT3_50PBA

:

U2DI_12_I	U2DI_12_Ex	U2DI_12_IEx	U2DI_24	U2DI_24_I
U2DI_24_C	U2DI_24_CEx	U2DI_24_Ex	U2DI_24_IC	U2DI_24_ICEx
U2DI_24_IEx	U2CI_DI_12	U2CI_DI_24	U2CI_DI_24_C	

:

UAO_E_0_20mA	UAO_E_4_20mA			
--------------	--------------	--	--	--

1
 2
 3
 4
 5
 6
 7
 8
 9

953 08

953 08 :
 24 « », (1A...6D)
 8 « », (7A...8D)

953 08 Unimod Pro :

« »:

U4DI_24_P				
-----------	--	--	--	--

« » 0,1

U4DO_01_N				
-----------	--	--	--	--

- 1
- 2
- ...
- 24
- 25
- 26
- ...
- 32

953 09

953 09 :
 8 , (1 ...2D)
 16 « », (3A...6D)
 8 « », (7A...8D)

953 09 Unimod Pro :

« »

U4DI-24-P				
-----------	--	--	--	--

« » 0,1

U4DO-01-N				
-----------	--	--	--	--

- 1
- 2
- ...
- 24
- 25
- 26

953 10

953 10 :
 2 , (1A...2D)

8 « », (3A...4D)
 8 « », (5A...6D)
 4 , (7A...8D)

953 10 Unimod Pro :

UAI-0-5mA	UAI-0-20mA	UAI-4-20mA	UAI-5mA	UAI-10mA
UAI-0-19mV	UAI-0-78mV	UAI-19mV	UAI-78mV	UAI-0-5V
UAI-0-10V	UAI-5V	UAI-10V		
UAR_100Om	UAR_200Om	UAR_500Om		
UTC_A1	UTC_A2	UTC_A3	UTC_B	UTC_E
UTC_J	UTC_K	UTC_L	UTC_N	UTC_S
UTC_T				
UTR_21	UTR_23	UTR_50M	UTR_50MA	UTR_50R
UTR_50PA	UTR_50PB	UTR_50PBA	UTR_50PT	UTR_50PTA
UTR_100M	UTR_100MA	UTR_100N	UTR_100P	UTR_100PA
UTR_100PB	UTR_100PBA	UTR_100PT	UTR_100PTA	

« »

U4DI-24-P				
-----------	--	--	--	--

« » 0,1

U4DO-01-N				
-----------	--	--	--	--

U2RO-220-50-NO				
----------------	--	--	--	--

- 1
- 2
- 3
- 4
- ...
- 10
- 11
- 12
- ...
- 18
- 19
- ...
- 22

953 11

953 11 :

16 (1 ...4D)
 4 (), (5A...8D)

953 11 Unimod Pro :

U4AI_4_20mA	U4AI_0_20mA			
-------------	-------------	--	--	--

:

U4AO_E_0_20mA	U4AO_E_4_20mA			
---------------	---------------	--	--	--

1
2
...
16
17
18
...
20

/ **954B**

954B 2 8 « »,
(), (1A...4D) 2 8
(5A...8D)

954B Unimod Pro :

:

U4DO_10_NL	U4DO_10_NLD			
------------	-------------	--	--	--

:

U4DI_12_N	U4DI_12_NI	U4DI_12_P	U4DI_12_PI	U4CI_DI_12_N
U4DI_24_N	U4DI_24_NI	U4DI_24_P	U4DI_24_PI	U4CI_DI_24_N
U4CI_DI_12_P	U4CI_DI_24_P			

1
2
...
16
17
18
...
32

954D

_____ **954D** 4 8 ()

954D Unimod Pro : _____

U4DI_12_N	U4DI_12_NI	U4DI_12_P	U4DI_12_PI	U4CI_DI_12_P
U4DI_24_N	U4DI_24_NI	U4DI_24_P	U4DI_24_PI	U4CI_DI_24_P
U4CI_DI_12_N	U4CI_DI_24_N			

1
2
...
32

954O

_____ **954O** 4 8 « »

954O Unimod Pro : _____

U4DO_10_NL	U4DO_10_NLD			
------------	-------------	--	--	--

32 -

955A

_____ **955A** 4 8 :

955A Unimod Pro : _____

U4AI_0_20mA_M	U4AI_4_20mA_M			
---------------	---------------	--	--	--

32 -

W931

W931 8

W931 Unimod Pro

:

UAI_0_5mA	UAI_5mA	UAI_10mA	UAI_0_20mA	UAI_4_20mA
UAI_0_19mV	UAI_19mV	UAI_0_78mV	UAI_78mV	UAI_0_1V
UAI_0_5V	UAI_5V	UAI_0_10V	UAI_10V	UTC_A1
UTC_A2	UTC_A3	UTC_B	UTC_E	UTC_J
UTC_K	UTC_L	UTC_N	UTC_S	UTC_T
UAR_100Om	UAR_200Om	UAR_500Om	UTR_50M	UTR_50MA
UTR_50P	UTR_50PA	UTR_50PB	UTR_50PBA	UTR_50PT
UTR_50PTA	UTR_21	UTR_23	UTR_100M	UTR_100MA
UTR_100N	UTR_100P	UTR_100PA	UTR_100PB	UTR_100PBA
UTR_100PT	UTR_100PTA			

8 -

W931R3

W931R3 8 ().

W931R3 Unimod Pro

:

URO_110_10_DT	URO_110_10_DTC	URO_220_05_DT	URO_220_05_DTC	
---------------	----------------	---------------	----------------	--

8 -

W931

W931 8
3- 4-

W931 Unimod Pro

:

UT3_21	UT3_23	UT3_50M	UT3_50MA	UT3_50P
UT3_50PA	UT3_50PB	UT3_50PBA	UT3_100M	UT3_100MA
UT3_100N	UT3_100P	UT3_100PA	UT3_100PB	UT3_100PBA
UT4_21	UT4_23	UT4_50M	UT4_50MA	UT4_50P
UT4_50PA	UT4_50PB	UT4_50PBA	UT4_50PT	UT4_50PTA
UT4_100M	UT4_100MA	UT4_100N	UT4_100P	UT4_100PA
UT4_100PB	UT4_100PBA	UT4_100PT	UT4_100PTA	UR3_100Om
UR3_200Om	UR3_500Om	UR4_100Om	UR4_200Om	UR4_500Om

8 -

W931V

W931V 8

W931V Unimod Pro

:

UAO_E_0_20mA	UAO_E_4_20mA			
--------------	--------------	--	--	--

8 -

W9330_S

W9330_S 8

W9330_S Unimod Pro

:

UDO_10_S	UDO_10_SEx			
----------	------------	--	--	--

8 -

W935

W935 8

W935 Unimod Pro

:

UR3_100Om_M	UR3_200Om_M	UR3_500Om_M	UR4_100Om_M	UR4_200Om_M
UR4_500Om_M	UT3_100M_M	UT3_100MA_M	UT3_100N_M	UT3_100P_M
UT3_100PA_M	UT3_21_M	UT3_23_M	UT3_50M_M	UT3_50MA_M
UT3_50P_M	UT3_50PA_M	UT4_100M_M	UT4_100MA_M	UT4_100N_M
UT4_100P_M	UT4_100PA_M	UT4_100PB_M	UT4_100PBA_M	UT4_21_M
UT4_23_M	UT4_50M_M	UT4_50MA_M	UT4_50P_M	UT4_50PA_M
UT4_50PB_M	UT4_50PBA_M			

8 -

/ W941B

W941B 8

(1A...4D) 8

(5A...8D)

W941B Unimod Pro

:

:

U2DO_01	U2DO_01_A	U2DO_01_Ex		
---------	-----------	------------	--	--

:

U2DI_12_I	U2DI_12_Ex	U2DI_12_IEx	U2DI_24	U2DI_24_I
U2DI_24_C	U2DI_24_CEx	U2DI_24_Ex	U2DI_24_IC	U2DI_24_ICEx
U2DI_24_IEx	U2CI_DI_12	U2CI_DI_24	U2CI_DI_24_C	

1

2
 ...
 8
 9
 10
 ...
 16

W941

_____ **W941** 16

W941 Unimod Pro

:

U2DO_01	U2DO_01_A	U2DO_01_Ex		
---------	-----------	------------	--	--

_____ 16 -

W941R1

_____ **W941R1** 16 (

)

W941R1 Unimod Pro

:

U2RO_110_10_NO	U2RO_110_10_NOC	U2RO_110_50_NO		
U2RO_220_05_NO	U2RO_220_05_NOC	U2RO_220_50_NO		

_____ 16 -

W941R2

_____ **W941R2** 16 (

)

W941R2 Unimod Pro

:

U2RO_110_10_NC	U2RO_110_10_NCC	U2RO_220_05_NC	U2RO_220_05_NCC	
----------------	-----------------	----------------	-----------------	--

16

-

W942A**W942A**

16

(

)

W942A Unimod Pro

:

U2AI_0_20mA	U2AI_4_20mA			
-------------	-------------	--	--	--

16

-

W943D**W943D**

16

W943D Unimod Pro

:

U2DI_12	U2DI_12_I	U2DI_12_Ex	U2DI_12_IEx	U2CI_DI_12
U2DI_24	U2DI_24_I	U2DI_24_Ex	U2DI_24_IEx	U2CI_DI_24

16

-

W943D_S**W943D_S**

16

W943D_S Unimod Pro

:

U2DI_24_C	U2DI_24_IC	U2DI_24_CEx	U2DI_24_ICEx	U2CI_DI_24
U2CI_DI_24_C	U2DI_24	U2DI_24_Ex	U2DI_24_I	U2DI_24_IEx

16

-

W943F

_____ **W943F** 16
 110 220 .

W943F Unimod Pro
 :

U2DI_110	U2DI_220			
----------	----------	--	--	--

_____ 16 -

W943O

_____ **W943O** 16

W943O Unimod Pro
 :

U2DO_10	U2DO_10_ Ex			
---------	-------------	--	--	--

_____ 16 -

W943O_S

_____ **W943O_S** 16

W943O_S Unimod Pro
 :

U2DO_10_	U2DO_10_ Ex			
----------	-------------	--	--	--

_____ 16 -

W945A1

_____ **W945A1** 16

W945A1 Unimod Pro

:

U2AI_0_20mA_M	U2AI_0_5mA_M	U2AI_10mA_M	U2AI_4_20mA_M	U2AI_5mA_M
---------------	--------------	-------------	---------------	------------

16

-

W945A2

()

W945A2 16**W945A2** Unimod Pro

:

U2AI_0_19mV_M	U2AI_0_78mV_M	U2AI_19mV_M	U2AI_78mV_M	U2AR_100Om_M
U2AR_200Om_M	U2AR_500Om_M	U2TC_A1_M	U2TC_A2_M	U2TC_A3_M
U2TC_B_M	U2TC_E_M	U2TC_J_M	U2TC_K_M	U2TC_L_M
U2TC_N_M	U2TC_S_M	U2TC_T_M	U2TR_100M_M	U2TR_100MA_M
U2TR_100N_M	U2TR_100P_M	U2TR_100PA_M	U2TR_100PB_M	U2TR_100PBA_M
U2TR_21_M	U2TR_23_M	U2TR_50M_M	U2TR_50MA_M	U2TR_50P_M
U2TR_50PA_M	U2TR_50PB_M	U2TR_50PBA_M		

16

-

W945A3

W945A3 16**W945A3** Unimod Pro

:

U2AI_0_10V_M	U2AI_0_5V_M	U2AI_10V_M	U2AI_5V_M	
--------------	-------------	------------	-----------	--

16

-

W945

_____ 4 **W945** 16 (4
).

: **W945** Unimod Pro

U2T4_100M_M	U2T4_100MA_M	U2T4_21_M		
U2T4_50M_M	U2T4_50MA_M	U2T4_23_M		

_____ 16 -

W951A

_____ **W951A** 4 8

: **W951A** Unimod Pro

U4AI_0_20mA	U4AI_4_20mA			
-------------	-------------	--	--	--

_____ 32 -

/ W951B

_____ **W951B** 2 8
« », (1A...4D) 2 8
(), (5A...8D)

W951B Unimod Pro :

:

U4DO_01_N	U4DO_01_NA	U4DO_01_NQ	U4DO_01_NQA	
-----------	------------	------------	-------------	--

:

U4DI_12_N	U4DI_12_NI	U4DI_12_P	U4DI_12_PI	U4CI_DI_12_N
U4DI_24_N	U4DI_24_NI	U4DI_24_P	U4DI_24_PI	U4CI_DI_24_N
U4CI_DI_12_P	U4CI_DI_24_P			

16	16
17	1
18	2
...	
32	16

W952O

_____ **W952O** 4 8
« »

W952O Unimod Pro :

U4DO_01_P	U4DO_01_PA	U4DO_01_PQ	U4DO_01_PQA	
-----------	------------	------------	-------------	--

_____ 32 -

/ W953

_____ **W953**

W953 Unimod Pro :

U2CI_DI_12	U2CI_DI_24	U2CI_DI_24_C	U2DI_110	U2DI_220
U2DI_12	U2DI_12_Ex	U2DI_12_I	U2DI_12_IEx	U2DI_24
U2DI_24_I	U2DI_24_C	U2DI_24_CEx	U2DI_24_Ex	U2DI_24_IC
U2DI_24_ICEx	U2DI_24_IEx	U2DO_01	U2DO_01_A	U2DO_01_Ex
U2DO_10	U2DO_10_	U2DO_10_ Ex	U2DO_10_Ex	U2RO_110_10_N C
U2RO_110_10_NCC	U2RO_110_10_NO	U2RO_110_10_NOC	U2RO_110_50_NO	U2RO_220_05_N C
U2RO_220_05_NCC	U2RO_220_05_NO	U2RO_220_05_NOC	U2RO_220_50_NO	URO_110_10_DT
URO_110_10_DTC	URO_220_05_DT	URO_220_05_DTC	U2SWD	U2SWDR
U4SWS	U4SWSR	USWD	U4AI_0_20mA	U4AI_4_20mA
U4CI_DI_12_N	U4CI_DI_12_P	U4CI_DI_24_N	U4CI_DI_24_P	U4DI_12_N
U4DI_12_NI	U4DI_12_P	U4DI_12_PI	U4DI_24_N	U4DI_24_NI
U4DI_24_P	U4DI_24_PI	U4DO_01_N	U4DO_01_NA	U4DO_01_NQ
U4DO_01_NQA	U4DO_01_P	U4DO_01_PA	U4DO_01_PQ	U4DO_01_PQA

U4DO_10_NL	U4DO_10_NLD	UAI_0_10V	UAI_0_1V	UAI_0_20mA
UAI_0_5mA	UAI_0_5V	UAI_4_20mA	UAI_5mA	UAI_5V
UAI_10mA	UAI_10V	UAI_0_19mV	UAI_0_78mV	UAI_19mV
UAI_78mV	UAO_E_0_20mA	UAO_E_4_20mA	UAR_100Om	UAR_200Om
UAR_500Om	UDO_10_S	UDO_10_SEx	UDO_110VAC	UDO_220VAC
UR3_100Om	UR3_200Om	UR3_500Om	UR4_100Om	UR4_200Om
UR4_500Om	U920L	URO_110_10_DT	URO_110_10_DTC	URO_220_05_DT
URO_220_05_DTC	UT3_100M	UT3_100MA	UT3_100N	UT3_100P
UT3_100PA	UT3_100PB	UT3_100PBA	UT3_21	UT3_23
UT3_50M	UT3_50MA	UT3_50P	UT3_50PA	UT3_50PB
UT3_50PBA	UT4_100M	UT4_100MA	UT4_100N	UT4_100P
UT4_100PA	UT4_100PB	UT4_100PBA	UT4_100PT	UT4_100PTA
UT4_21	UT4_23	UT4_50M	UT4_50MA	UT4_50P
UT4_50PA	UT4_50PB	UT4_50PBA	UT4_50PT	UT4_50PTA
UTC_A1	UTC_A2	UTC_A3	UTC_B	UTC_E
UTC_J	UTC_K	UTC_L	UTC_N	UTC_S
UTC_T	UTR_21	UTR_23	UTR_50M	UTR_50MA
UTR_50P	UTR_50PA	UTR_50PB	UTR_50PBA	UTR_50PT
UTR_50PTA	UTR_100M	UTR_100MA	UTR_100N	UTR_100P
UTR_100PA	UTR_100PB	UTR_100PBA	UTR_100PT	UTR_100PTA

/

W953

W953 01

W953 01 :

4 , (1 ...1D)
 12 « » , (2A...4D)
 16 « » , (5A...8D)

W953 01 Unimod Pro :

U4AI_0_20mA	U4AI_4_20mA			
-------------	-------------	--	--	--

1
2
...
8
9
10
...
14

W953 03

8 **W953 03** : « », (1A...2D)
6 T4, (3 ...8D)

W953 03 Unimod Pro :

U4DO_01_N	U4DO_01_NA	U4DO_01_NQ	U4DO_01_NQA	
-----------	------------	------------	-------------	--

T4

UT4_100M	UT4_100MA	UT4_100N	UT4_100P	UT4_100PA
UT4_100PB	UT4_100PBA	UT4_100PT	UT4_100PTA	UT4_21
UT4_23	UT4_50M	UT4_50MA	UT4_50P	UT4_50PA
UT4_50PB	UT4_50PBA	UT4_50PT	UT4_50PTA	UR3_100Om
UR3_200Om	UR3_500Om	UR4_100Om	UR4_200Om	UR4_500Om
UT3_100M	UT3_100MA	UT3_100N	UT3_100P	UT3_100PA
UT3_100PB	UT3_100PBA	UT3_21	UT3_23	UT3_50M
UT3_50MA	UT3_50P	UT3_50PA	UT3_50PB	UT3_50PBA

1
2
...
8
9
10
...
14

W953 04

W953 04 :

4 (1 ...1D)
 2 (2A...3D)
 2 T4, (4A...5D)
 8 « », (6A...7D)
 4 « », (8A...8D)

W953 04 Unimod Pro :

U4AI_4_20mA	U4AI_0_20mA			
-------------	-------------	--	--	--

UAI_0_10V	UAI_0_1V	UAI_0_20mA	UAI_0_5mA	UAI_0_5V
UAI_4_20mA	UAI_5mA	UAI_5V	UAI_10mA	UAI_10V
UAI_0_19mV	UAI_0_78mV	UAI_19mV	UAI_78mV	UAR_100Om
UAR_200Om	UAR_500Om	UTC_A1	UTC_A2	UTC_A3
UTC_B	UTC_E	UTC_J	UTC_K	UTC_L
UTC_N	UTC_S	UTC_T	UTR_21	UTR_23
UTR_50M	UTR_50MA	UTR_50P	UTR_50PA	UTR_50PB
UTR_50PBA	UTR_50PT	UTR_50PTA	UTR_100M	UTR_100MA
UTR_100N	UTR_100P	UTR_100PA	UTR_100PB	UTR_100PBA
UTR_100PT	UTR_100PTA			

T4

UT4_100M	UT4_100MA	UT4_100N	UT4_100P	UT4_100PA
UT4_100PB	UT4_100PBA	UT4_100PT	UT4_100PTA	UT4_21
UT4_23	UT4_50M	UT4_50MA	UT4_50P	UT4_50PA
UT4_50PB	UT4_50PBA	UT4_50PT	UT4_50PTA	UR3_100Om
UR3_200Om	UR3_500Om	UR4_100Om	UR4_200Om	UR4_500Om
UT3_100M	UT3_100MA	UT3_100N	UT3_100P	UT3_100PA
UT3_100PB	UT3_100PBA	UT3_21	UT3_23	UT3_50M
UT3_50MA	UT3_50P	UT3_50PA	UT3_50PB	UT3_50PBA

U4DI_24_P	U4CI_DI_24_P			
-----------	--------------	--	--	--

U4DO_01_N				
-----------	--	--	--	--

1
2
...
8
9
10
...
16
17
18
...
20

W953 05

W953 05 :
4 , (1 ...1D)
2 T4, (2A...3D)
20 « », (4A...8D)

W953 05 Unimod Pro :

U4AI_4_20mA	U4AI_0_20mA			
-------------	-------------	--	--	--

T4

UT4_100M	UT4_100MA	UT4_100N	UT4_100P	UT4_100PA
UT4_100PB	UT4_100PBA	UT4_100PT	UT4_100PTA	UT4_21
UT4_23	UT4_50M	UT4_50MA	UT4_50P	UT4_50PA
UT4_50PB	UT4_50PBA	UT4_50PT	UT4_50PTA	UR3_100Om
UR3_200Om	UR3_500Om	UR4_100Om	UR4_200Om	UR4_500Om
UT3_100M	UT3_100MA	UT3_100N	UT3_100P	UT3_100PA
UT3_100PB	UT3_100PBA	UT3_21	UT3_23	UT3_50M
UT3_50MA	UT3_50P	UT3_50PA	UT3_50PB	UT3_50PBA

U4DO_01_N				
-----------	--	--	--	--

1
2
...
6
7
8
...
26

W953 06

28
4

W953 06 :

« », (1 ...7D)
», (8A...8D)

W953 06 Unimod Pro :

U4AI_4_20mA	U4AI_0_20mA			
-------------	-------------	--	--	--

U4DO_01_N				
-----------	--	--	--	--

1
2
...
28
29
30
...
32

W953 07

4
1
2
2

W953 07 :

, (1 ...4D) T4, (5A...5D)
, (6A...6D)
(), (7A...8D)

W953 07 Unimod Pro :

UAI_0_5mA	UAI_4_20mA			
-----------	------------	--	--	--

T4

UT4_100M	UT4_100MA	UT4_100N	UT4_100P	UT4_100PA
UT4_100PB	UT4_100PBA	UT4_100PT	UT4_100PTA	UT4_21
UT4_23	UT4_50M	UT4_50MA	UT4_50P	UT4_50PA
UT4_50PB	UT4_50PBA	UT4_50PT	UT4_50PTA	UR3_100Om
UR3_200Om	UR3_500Om	UR4_100Om	UR4_200Om	UR4_500Om
UT3_100M	UT3_100MA	UT3_100N	UT3_100P	UT3_100PA
UT3_100PB	UT3_100PBA	UT3_21	UT3_23	UT3_50M
UT3_50MA	UT3_50P	UT3_50PA	UT3_50PB	UT3_50PBA

:

U2DI_12_I	U2DI_12_Ex	U2DI_12_IEx	U2DI_24	U2DI_24_I
U2DI_24_C	U2DI_24_CEx	U2DI_24_Ex	U2DI_24_IC	U2DI_24_ICEx
U2DI_24_IEx	U2CI_DI_12	U2CI_DI_24	U2CI_DI_24_C	

:

UAO_E_0_20mA	UAO_E_4_20mA			
--------------	--------------	--	--	--

1
2
3
4
5
6
7
8
9

W953 08**W953 08**

:

24
8

« », (1A...6D)
», (7A...8D)

W953 08 Unimod Pro

:

« »:

U4DI_24_P				
-----------	--	--	--	--

« » 0,1

U4DO_01_N				
-----------	--	--	--	--

1
2
...
24
25
26
...
32

W953 09

W953 09 :
 8 , (1 ...2D)
 16 « », (3A...6D)
 8 « », (7A...8D)
W953 09 Unimod Pro :

U4AI-4-20mA	U4AI-0-20mA			
-------------	-------------	--	--	--

« »

U4DI-24-P				
-----------	--	--	--	--

« » 0,1

U4DO-01-N				
-----------	--	--	--	--

« » 0,1

DO-01-N				
---------	--	--	--	--

1
2
...
24
25
26
...
32

W953 10

W953 10 :
 2 , (1A...2D)

8 « », (3A...4D)
 8 « », (5A...6D)
 4 , (7A...8D)

W953 10 Unimod Pro

:

UAI-0-5mA	UAI-0-20mA	UAI-4-20mA	UAI-5mA	UAI-10mA
UAI-0-19mV	UAI-0-78mV	UAI-19mV	UAI-78mV	UAI-0-5V
UAI-0-10V	UAI-5V	UAI-10V		
UAR_100Om	UAR_200Om	UAR_500Om		
UTC_A1	UTC_A2	UTC_A3	UTC_B	UTC_E
UTC_J	UTC_K	UTC_L	UTC_N	UTC_S
UTC_T				
UTR_21	UTR_23	UTR_50M	UTR_50MA	UTR_50R
UTR_50PA	UTR_50PB	UTR_50PBA	UTR_50PT	UTR_50PTA
UTR_100M	UTR_100MA	UTR_100N	UTR_100P	UTR_100PA
UTR_100PB	UTR_100PBA	UTR_100PT	UTR_100PTA	

« »

U4DI-24-P				
-----------	--	--	--	--

« » 0,1

U4DO-01-N				
-----------	--	--	--	--

U2RO-220-50-NO				
----------------	--	--	--	--

1
 2
 3
 4
 ...
 10
 11
 12
 ...
 18
 19
 ...
 22

W953 11**W953 11**

:

16 (1 ...4D)
 4 (), (5A...8D)

W954D

_____ **W954D** 4 8
 ()

: **W954D** Unimod Pro

U4DI_12_N	U4DI_12_NI	U4DI_12_P	U4DI_12_PI	U4CI_DI_12_N
U4DI_24_N	U4DI_24_NI	U4DI_24_P	U4DI_24_PI	U4CI_DI_24_N
U4CI_DI_12_P	U4CI_DI_24_P			

_____ 32 -

W954O

_____ **W954O** 4 8
 « »,

: **W954O** Unimod Pro

U4DO_10_NL	U4DO_10_NLD			
------------	-------------	--	--	--

_____ 32 -

W955A

_____ **W955A** 4 8

: **W955A** Unimod Pro

U4AI_0_20mA_M	U4AI_4_20mA_M			
---------------	---------------	--	--	--

_____ 32 -

M921E

E931A

1:

8

AI-0-5mA, AI-0-20mA, AI-4-20mA, AI-5mA, AI-10mA,
AI-0-19mV, AI-0-78mV, AI-19mV, AI-78mV,
AI-0-5V, AI-0-10V, AI-5V, AI-10V

2:

8

AR-100Om, AR-200Om, AR-500Om

3:

8

TC-S, TC-B, TC-J, TC-T, TC-E, TC-K, TC-N, TC-L,
TC-A-1, TC-A-2, TC-A-3

4:

8

TR-50P, TR-100P, TR-50PT, TR-100PT, TR-50P , TR-100P ,
TR-50PT , TR-100PT , TR-50PB, TR-100P , TR-50PB , TR-100P ,
TR-50 , TR-100 , TR-50 , TR-100 , TR-100N, TR-21, TR-23

E931R3

8

() RO-110-
10-DTC, RO-110-10-DT, RO-220-05-DTC, RO-220-05-DT

E931T

1:

8

3- 4-

T3, T4

2:

8

3- 4-

R3, R4

E931V

8

AO-E-0-20mA (0...20), AO-E-4-

20mA (4...20)

E933O_S

8

(2)

DO-20-S (

)

E941B

8

(100) DO-01, (1A...4D),

8

/ ,

(5A...8D)

: DI-12, DI-24, DI-24-C

: CI-DI-12, CI-DI-24

(, 2 ,)

E941O

16

(100) DO-01

E941R1

16

()

RO-110-10-NOC, RO-110-10-NO, RO-110-50-NO, RO-220-05-NOC,

RO-220-05-NO, RO-220-50-NO

E941R2

16 ()
 RO-110-10-NCC, RO-110-10-NC, RO-220-05-NCC, RO-220-05-NC

E943D

16 /
 : DI-12, DI-24
 : CI-DI-12, CI-DI-24

(, 2 ,
)

E943D_S

16
 DI-24-C

E943F

16 DI-110 (~110)
 DI-220 (~220)

E943O

16 (2 A) DO-20

E943O_S

16 (2 A), DO-20-C

E951A

4 8 AI-0-
 20mA-N (0...20), AI-4-20mA-N (4...20)

E951B

2 8 DO-01-N
 « » , 100 ()
 “+”, (1A...4D),
 2 8 / ,
 (5A...8D)

: DI-12-P, DI-24-P

: CI-DI-12-P, CI-DI-24-P

“-” (

),

(, 4 ,)

E951O

4 8 DO-01-N

« » , 100 (“+”)

E952B

2 8 DO-01-P

« » (“-”), (1A...4D),

2 8 / , (5A...8D)

: DI-12-N, DI-24-N

: CI-DI-12-N, CI-DI-24-N

“+” (

),

(, 4 ,)

E952O

4 8 DO-01-P

« » , 100 ().

E953C

/ ,

TREI

E953C01

4	1A...1D	0...20 / 4...20	AI-0-20mA-N AI-4-20mA-N
12	2A...4D	« » 0,1 DO-01-N	
16	5A...8D	« » DI-24-P (24), DI-12-P(12)	

E953C02

8	1A...2D	« » 0,1 DO-01-N	
6	3 ...8D		

AI-0-5mA, AI-0-20mA, AI-4-20mA, AI-5mA, AI-10mA,
 AI-0-19mV, AI-0-78mV, AI-19mV, AI-78mV,
 AI-0-5V, AI-0-10V, AI-5V, AI-10V;

AR;

TC;

TR

E953C03

8	1A...2D	« » 0,1 , DO-01-N	
6	3 ...8D		3- 4-
T3, T4;		3- 4-	R3, R4

E953C04

4 1 ...1D

AI-4-20mA-N (4...20)

2 2A...3D

AI-0-5mA, AI-0-20mA, AI-4-20mA,
 AI-5mA, AI-10mA, AI-0-19mV, AI-0-78mV, AI-19mV, AI-78mV, AI-0-5V,
 AI-0-10V, AI-5V, AI-10V

AR;

TC;

TR

2 4A...5D

3- 4-

T3, T4;

3- 4-

R3, R4

8 6A...7D

« » DI-24-P (24)

4 8A...8D

« » 0,1 DO-01-N

E953C05

4

1 ...1D

AI-4-20mA-N (4...20)

2

2A...3D

T3, T4; 3- 4-
3- 4- R3, R4

20

4A...8D

« » 0,1 DO-01-N

E953C06

28

1 ...7D

AI-4-20mA-N (4...20)

« » 0,1 DO-01-N

4

8A...8D

« » 0,1 DO-01-N

E953C07

2

AI-4-20mA-N (4...20)

, AI-0-20mA-N (0...20)

1 ...2D

2

AI-0-5mA, AI-0-20mA, AI-4-20mA,

AI-5mA, AI-10mA, AI-0-19mV, AI-0-78mV, AI-19mV, AI-78mV, AI-0-5V,

AI-0-10V, AI-5V, AI-10V

AR;

TC;

TR

3 ...4D

1

3- 4-

T3, T4;

3- 4-

R3, R4

5A...5D

2

DI-24

6A...6D

2

() AO-E-4_20mA

7A...8D

E953C08

24 , 1A...6D

« » DI-24-P

8 , 7A...8D

« » 0,1 DO-01-N

E953C09

8 , (1 ...2D)

AI-4-20mA-N (4...20) , AI-0-20mA-N (0...20)

16 , (3A...6D)

« » DI-24-P

8 , (7A...8D)

« » 0,1 DO-01-N

E953C10

2 , (1A...2D)

AI-0-5mA, AI-0-20mA, AI-4-20mA, AI-5mA, AI-10mA, AI-0-19mV,
AI-0-78mV, AI-19mV, AI-78mV, AI-0-5V, AI-0-10V, AI-5V, AI-10V

AR;

TC;

TR

8 , (3A...4D) « » DI-24-P (24)

8 , (5A...6D) « » 0,1 DO-01-N

4 , (7A...8D)
RO-220-50-NO

E953C11

16 , (1 ...4D)
AI-4-20mA-N (4...20) ,
AI-0-20mA-N (0...20)

4 , (5A...8D)
() AO-E-4_20mA

E954B

2 8 DO-10-NL
« »* , 1 , ,
(1A...4D),
2 8 / ,
(5A...8D)

: DI-12-P, DI-24-P

: CI-DI-12-P, CI-DI-24-P

“-” (

),

(, 4 ,)

E954D

4 8 /

: DI-12-P, DI-24-P

: CI-DI-12-P, CI-DI-24-P

“-” (

),

“+” (

),

: DI-12-N, DI-24-N

: CI-DI-12-N, CI-DI-24-N

(, 4 ,)

E954O

4 8 DO-10-NL

« »* , 1 A,

-

-

		(
--	--	---	--

		hex)	
M2DI	, 2-		
	M2DI_110	0 0 7 1	110 /
	M2DI_220	0 0 7 2	220 /
	M2DI_12	0 0 6 B	12
	M2DI_12_I	0 0 6 C	12 ,
	M2DI_24	0 0 6 D	24
	M2DI_24_I	0 0 6 F	24 ,
	M2DI_24_C	0 0 6 E	24 ,
M4DI	, 4-		
	M4DI_12_N	0 0 7 5	12 , "-"
	M4DI_12_NI	0 0	12 , , "-"

		7 6	
	M4DI_12_P	0 0 7 3	12 , "+"
	M4DI_12_PI	0 0 7 4	12 , , "+"
	M4DI_24_N	0 0 7 9	24 , "-"
	M4DI_24_NI	0 0 7 A	24 , , "-"
	M4DI_24_P	0 0 7 7	24 , "+"
	M4DI_24_PI	0 0 7 8	24 , , "+"
M2DO	, 2-		
	M2DO_01	0 0 7 C	0.1A
	M2DO_20	0 0 7 D	2.0A
	M2DO_20_C	0 0 7 E	2.0A ,

	M2DO_20_F	0 0 2	2.0A , a,
M4DO	, 4-		
	M4DO_01_N	0 0 8 1	0.1A , “-”
	M4DO_01_NQ	0 0 8 2	0.1A , “-” ,
	M4DO_01_P	0 0 7 F	0.1A , “+”
	M4DO_01_PQ	0 0 8 0	0.1A , “+” ,
	M4DO_05_NLD	0 0 8 4	0.5A , “-” ,
	M4DO_10_NL	0 0 8 3	2.0A , “-” ,
MDO	,		
	MDO_05_S	0 0 7 B	0.5A ,
	MDO_40_F	0 0 A 3	4 , a,

M2CI/ DI	2-		,
	M2CI_DI_12	0 0 6 4	12
	M2CI_DI_24	0 0 6 5	24
	M2CI_DI_24_C	0 0 6 6	24 ,
M4CI/ DI	4-		,
	M4CI_DI_12_N	0 0 6 9	12 , "-"
	M4CI_DI_12_P	0 0 6 7	12 , "+"
	M4CI_DI_24_N	0 0 6 A	24 , "-"
	M4CI_DI_24_P	0 0 6 8	24 , "+"
MCI			

	MCI_MI_5	0 0 8 5	, 12
	MCI_MI_12	0 0 8 6	, 12
	MCI_MI_24	0 0 8 7	12 ,
	MCI_TPU_5	0 0 8 8	12 ,
	MCI_TPU_12	0 0 8 9	12 ,
	MCI_TPU_24	0 0 8	12 ,
MSTB			
	MSTB_16D	0 0 9 B	16-
	MSTB_32D	0 0 9 D	32-
	MSTB_16O	0 0 9 C	16-
	MSTB_32O	0 0 9	32-

		E	
MAO			
	MAO_E_0_20mA	0 0 5 A	0 - 20mA
	MAO_E_4_20mA	0 0 5 B	4 - 20mA
	MAO_0_5V	0 0 5 C	0 - 5
	MAO_0_10V	0 0 5 D	0 - 10
MAI			
	MAI_0_10V	0 0 0 A	0÷10
	MAI_0_1V	0 0 0 8	0÷1 ,
	MAI_0_20mA	0 0 0 2	0÷20
	MAI_0_5mA	0 0 0 1	0÷5
	MAI_0_5V	0 0	0÷5

		0 9	
	MAI_4_20mA	0 0 0 3	4±20
	MAI_5mA	0 0 0 4	±5
	MAI_5V	0 0 0 6	±5
	MAI_10mA	0 0 0 5	±10
	MAI_10V	0 0 0 7	±10
	MAR_100Om	0 0 0 B	100
	MAR_200Om	0 0 0 C	200
	MAR_500Om	0 0 0 D	500
	MR3_100Om	0 0 3 0	100 ,3-
	MR3_200Om	0 0 3 1	200 ,3-
	MR3_500Om	0 0 3	500 ,3-

		2	
	MR4_100Om	0 0 3 3	100 , 4-
	MR4_200Om	0 0 3 4	200 , 4-
	MR4_500Om	0 0 3 5	500 , 4-
MAI/C			
	MAI_0_19mV	0 0 2 3	0÷19 ,
	MAI_0_78mV	0 0 2 4	0÷78 ,
	MAI_19mV	0 0 2 1	±19 ,
	MAI_78mV	0 0 2 2	±78 ,
M4AI	4-		
	M4AI_0_20mA	0 0 5 8	0÷20
	M4AI_4_20mA	0 0 5 9	4÷20
MTR			

MTR_21	0 0 1 B	21	250 ,
MTR_23	0 0 1 C	23	100 ,
MTR_50M	0 0 1 9	W100=2.4280	100 , 50 ,
MTR_50MA	0 0 1 F	W100=2.4260	100 , 50 ,
MTR_50P	0 0 1 7	W100=2.3910	250 , 50 ,
MTR_50PA	0 0 1 D	W100=2.3850	250 , 50 ,
MTR_50PB	0 0 1 1	W100=2.3910	125 , 50 ,
MTR_50PBA	0 0 1 5	W100=2.3850	125 , 50 ,
MTR_50PT	0 0 0 E	W100=2.3910	65 , 50 ,
MTR_50PTA	0 0 1 3	W100=2.3850	65 , 50 ,
MTR_100M	0 0 1 A	W100=2.4280	200 , 100 ,
MTR_100MA	0		200 , 100 ,

		0 2 0	W100=2.4260
	MTR_100N	0 0 1 0	250 , 100
	MTR_100P	0 0 1 8	500 , 100 , W100=2.3910
	MTR_100PA	0 0 1 E	500 , 100 , W100=2.3850
	MTR_100PB	0 0 1 2	250 , 100 , W100=2.3910
	MTR_100PBA	0 0 1 6	250 , 100 , W100=2.3850
	MTR_100PT	0 0 0 F	130 , 100 , W100=2.3910
	MTR_100PTA	0 0 1 4	130 , 100 , W100=2.3850
MTC/ C			
	MTC_A1	0 0 2 D	A1, 0+78
	MTC_A2	0 0 2 E	A2, 0+78
	MTC_A3	0 0	A3, 0+78

		2 F	
	MTC_B	0 0 2 6	B, 0÷19
	MTC_E	0 0 2 9	E, ±78
	MTC_J	0 0 2 7	J, ±78
	MTC_K	0 0 2 A	K, ±78
	MTC_L	0 0 2 C	L, ±78
	MTC_N	0 0 2 B	N, ±78
	MTC_S	0 0 2 5	S, 0÷19
	MTC_T	0 0 2 8	T, ±78
MT3	, 3-		
	MT3_100M	0 0 3 9	W100=2.4280 200 , 100 ,
	MT3_100MA	0 0 4 2	W100=2.4260 200 , 100 ,

MT3_100N	0 0 3 C	250 , 100
MT3_100P	0 0 3 7	W100=2.3910 500 , 100 ,
MT3_100PA	0 0 4 0	W100=2.3850 500 , 100 ,
MT3_100PB	0 0 3 E	W100=2.3910 250 , 100 ,
MT3_100PBA	0 0 4 4	W100=2.3850 250 , 100 ,
MT3_21	0 0 3 A	21 250 ,
MT3_23	0 0 3 B	23 100 ,
MT3_50M	0 0 3 8	W100=2.4280 100 , 50 ,
MT3_50MA	0 0 4 1	W100=2.4260 100 , 50 ,
MT3_50P	0 0 3 6	W100=2.3910 250 , 50 ,
MT3_50PA	0 0 3 F	W100=2.3850 250 , 50 ,
MT3_50PB	0	125 , 50 ,

		0 3 D	W100=2.3910	
	MT3_50PBA	0 0 4 3	W100=2.3850	125 , 50 ,
MT4			, 4-	
	MT4_100M	0 0 4 8	W100=2.4280	200 , 100 ,
	MT4_100MA	0 0 5 3	W100=2.4260	200 , 100 ,
	MT4_100N	0 0 4 D		250 , 100
	MT4_100P	0 0 4 6	W100=2.3910	500 , 100 ,
	MT4_100PA	0 0 5 1	W100=2.3850	500 , 100 ,
	MT4_100PB	0 0 4 F	W100=2.3910	250 , 100 ,
	MT4_100PBA	0 0 5 7	W100=2.3850	250 , 100 ,
	MT4_100PT	0 0 4 C	W100=2.3910	130 , 100 ,
	MT4_100PTA	0 0 5	W100=2.3850	130 , 100 ,

		5	
	MT4_21	0 0 4 9	21 250 ,
	MT4_23	0 0 4 A	23 100 ,
	MT4_50M	0 0 4 7	W100=2.4280 100 , 50 ,
	MT4_50MA	0 0 5 2	W100=2.4260 100 , 50 ,
	MT4_50P	0 0 4 5	W100=2.3910 250 , 50 ,
	MT4_50PA	0 0 5 0	W100=2.3850 250 , 50 ,
	MT4_50PB	0 0 4 E	W100=2.3910 125 , 50 ,
	MT4_50PBA	0 0 5 6	W100=2.3850 125 , 50 ,
	MT4_50PT	0 0 4 B	W100=2.3910 65 , 50 ,
	MT4_50PTA	0 0 5 4	W100=2.3850 65 , 50 ,
M			
	MOPC_1MA	0	, 1 A

		0 5 E	
	MOPC_2MA	0 0 5 F	, 2 A
	MOPC_5MA	0 0 6 0	, 5 A
MOPV			
	MOPV_8V_DI	0 0 6 1	NAMUR , 8 ,
	MOPV_24V	0 0 6 2	, 24
	MOPV_24V_DI	0 0 6 3	, 24 ,

-

M2DI

M2DI 110, M2DI 220

- 1
- 2

M2DI 1, M2DI 12 I, M2DI 24, M2DI 24 I, M2DI 24

- 1 , 1
- 2 , 2

M4DI

1
2
3
4

-

M2DO

1
2

M4DO

1
2
3
4

MDO

1

-

M2CI/DI

1	,	231 -1
2	,	231 -1
3	,	

4CI/DI

1	,	231 -1
2	,	231 -1

3 , 231 -1
4 , 231 -1
5 ,

MCI-MI

1 - ().
2 - ().
3 - ().
4 - .
5 - .

:
0 - .
5 - .
7 - 1 - , 0 - .
16 - .
17 - 161 .
19 - (BAD_PW - bad pulse width).

MCI-TPU

1 - ().
2 - ().
3 - 1 .
4 - 2 .
5 - .

:
0 - .
0 - ITPU: 1 - , 0 - .
5 - .
7 - 1 - , 0 - .
16 - .
17 - 161 .
19 - (BAD_PW - bad pulse width).

```

:      MSTB-320
:      : TREI
:
:      1      32 -

:      MSTB-32D
:      : TREI
:
:      1      32 -

:      MSTB-160
:      : TREI
:
:      c 1      16 -

:      MSTB-16D
:      : TREI
:
:      c 1      16 -

-

```

MAOI

```

:      MAOI-E-0_20mA
:      : TREI
:
:      1 -      ,      0-20 m

:      MAOI-E-4_20mA
:      : TREI
:
:      1 -      ,      4-20 m

```

MAOU

```

:      MAO-0_5V
:      : TREI
:
:      1 -      , V      0-5 V

```


: MAO-0_10V
: TREI
: 0-10 V
: 1 - , V
-

MAI

1

MAI/C

1

M4AI

1
2
3
4

MTR

1

MTC/C

1

M 3

1

M 4

1

M

1 ,**M V**

1 ,**MAR**

:	:	MAR-100Om	
	:	TREI	
	:		100 Om
	:	1 -	

:	:	MAR-200Om	
	:	TREI	
	:		200 Om
	:	1 -	

:	:	MAR-500Om	
	:	TREI	
	:		500 Om
	:	1 -	

MR3

:	:	MR3-100Om	
	:	TREI	
	:		100Om, 3-
	:	1 -	

:	:	MR3-200Om	
	:	TREI	
	:		200Om, 3-
	:	1 -	

:	:	MR3-500Om	
	:	TREI	
	:		500Om, 3-
	:	1 -	

MR4

: MR4-100Om
: TREI
: 100Om, 4-
: 1 -

: MR4-200Om
: TREI
: 200Om, 4-
: 1 -

: MR4-500Om
: TREI
: 500Om, 4-
: 1 -

M2AI

: M2AI-0_5mA
: TREI
: , 2- , 0...5
: 1 A
: 2 B
: 3 A
: 4 B

: M2AI-0_20mA
: TREI
: , 2- , 0...20
: 1 A
: 2 B
: 3 A
: 4 B

: M2AI-4_20mA
: TREI
: , 2- , 4...20
: 1 A
: 2 B
: 3 A
: 4 B

-

--	--	--	--

U2DI		, 2-	,
U2DI_110	0 0 1 5	110	/
U2DI_220	0 0 1 6	220	/
U2DI_12	0 0 0 2	12	
U2DI_12_I	0 0 0 6	12	,
U2DI_12_Ex	0 0 0 1	12	,
U2DI_12_IEx	0 0 0 C	12	, ,
U2DI_24	0 0 0 3	24	
U2DI_24_I	0 0 0 7	24	,
U2DI_24_C	0 0 0 4	24	,
U2DI_24_CEx	0 0 0 9	24	, ,
U2DI_24_Ex	0	24	,

		0 0 5	
	U2DI_24_IC	0 0 0 8	24 , ,
	U2DI_24_ICEx	0 0 1 2	24 , , ,
	U2DI_24_IEx	0 0 0 F	24 , ,
U4DI			, 4-
	U4DI_12_N	0 0 0 D	12 , "-"
	U4DI_12_NI	0 0 1 3	12 , , "-"
	U4DI_12_P	0 0 0 A	12 , "+"
	U4DI_12_PI	0 0 1 0	12 , , "+"
	U4DI_24_N	0 0 0 E	24 , "-"
	U4DI_24_NI	0 0 1 4	24 , , "-"
	U4DI_24_P	0 0 0 B	24 , "+"
	U4DI_24_PI	0	24 , , "+"

		0 1 1	
U2DO	, 2-		
	U2DO_01	0 0 1 7	0.1A
	U2DO_01_A	0 0 2 7	0.1A /
	U2DO_01_Ex	0 0 1 C	0.1A ,
U2DO H	, 2-		
	U2DOH_05_CD	0 0 5 D	0.5 , ,
	U2DOH_05_D	0 0 5 C	0.5
	U2DOH_05_LD	0 0 5 E	0.5 ,
	U2DOH_20	0 0 1 8	2.0
	U2DOH_20_C	0 0 1 9	2.0 , ,
	U2DOH_20_L	0 0 1 A	2.0 ,

UDOH			
	UDOH_05_SD	0 0 1 E	0.5 ,
	UDOH_20_S	0 0 1 D	20 ,
U4DO			
	U4DO_01_N	0 0 2	0.1A , “-”
	U4DO_01_NA	0 0 3 6	0.1A / , “-”
	U4DO_01_NQ	0 0 3 4	0.1A , “-”
	U4DO_01_NQA	0 0 3 8	0.1A / , “-”
	U4DO_01_P	0 0 2	0.1A , “+”
	U4DO_01_PA	0 0 3 5	0.1A / , “+”
	U4DO_01_PQ	0 0 3 3	0.1A , “+”
	U4DO_01_PQA	0 0 3 7	0.1A / , “+”
	U4DO_10_NL	0	2.0A , “-”

		0 2	
	U4DO_10_NLD	0 0 2 D	2.0A , “ ” ,
UDO/ VAC			
	UDO_110VAC	0 0 1 F	110
	UDO_220VAC	0 0 2 0	220
U2RO			
	U2RO_110_10_NC	0 1 5 6	2
	U2RO_110_10_NCC	0 0 2 3	2 ,
	U2RO_110_10_NO	0 1 5 4	2
	U2RO_110_10_NOC	0 0 2 1	2 ,
	U2RO_110_50_NO	0 0 2	2
	U2RO_220_05_NC	0 1 5 7	2
	U2RO_220_05_NCC	0	2 ,

		0 2 4	
	U2RO_220_05_NO	0 1 5 5	2
	U2RO_220_05_NOC	0 0 2 2	2 ,
	U2RO_220_50_NO	0 0 2 F	2
	URO_110_10_DT	0 1 5 8	1
	URO_110_10_DT	0 0 2 5	1 ,
	URO_220_05_DT	0 1 5 9	1
	URO_220_05_DTC	0 0 2 6	1 ,
USW			
	U2SWD	0 0 2 8	2 1
	U2SWDR	0 0 3 0	2 1 ,
	U4SWS	0 0 2 9	4 1
	U4SWSR	0	4 1 ,

		0 3 1	
	USWD	0 0 3 2	2 , 1 1
U1CI/ DI			
	U1CI_DI	0 1 6 B	
U2CI/ DI	2-		
	U2CI_DI_12	0 1 5 B	12
	U2CI_DI_24	0 1 5 C	24
	U2CI_DI_24_C	0 1 5 D	24 ,
U4CI/ DI	4-		
	U4CI_DI_12_N	0 0 5 0	12 , "-"
	U4CI_DI_12_P	0 0 4 D	12 , "+"
	U4CI_DI_24_N	0 0 5 1	24 , "-"
	U4CI_DI_24_P	0 0	24 , "+"

		4 E	
UAO			
	UAO_E_0_20mA	0 0 5 A	, 0 20
	UAO_E_4_20mA	0 0 5 B	, 4 20
UAI			
	UAI_0_10V	0 0 6 7	0÷10
	UAI_0_1V	0 0 6 F	0÷1 ,
	UAI_0_20mA	0 0 6 0	0÷20
	UAI_0_5mA	0 0 5 F	0÷5
	UAI_0_5V	0 0 6 6	0÷5
	UAI_4_20mA	0 0 6 1	4÷20
	UAI_5mA	0 0 6 2	±5

	UAI_5V	0 0 6 4	±5
	UAI_10mA	0 0 6 3	±10
	UAI_10V	0 0 6 5	±10
	UAR_100Om	0 0 6 A	100
	UAR_200Om	0 0 6 B	200
	UAR_500Om	0 0 6 C	500
	UR3_100Om	0 0 3 A	100 , 3-
	UR3_200Om	0 0 3 B	200 , 3-
	UR3_500Om	0 0 3 C	500 , 3-
	UR4_100Om	0 0 3 D	100 , 4-
	UR4_200Om	0 0 3 E	200 , 4-
	UR4_500Om	0 0 3	500 , 4-

		F	
UAI			
	UR3_100Om_M	0 0 D 7	100 , 3-
	UR3_200Om_M	0 0 D 8	200 , 3-
	UR3_500Om_M	0 0 D 9	500 , 3-
	UR4_100Om_M	0 0 D 4	100 , 4-
	UR4_200Om_M	0 0 D 5	200 , 4-
	UR4_500Om_M	0 0 D 6	500 , 4-
UAI/C			
	UAI_0_19mV	0 0 8 7	0+19 ,
	UAI_0_78mV	0 0 8 8	0+78 ,
	UAI_19mV	0 0 8 5	±19 ,
	UAI_78mV	0 0 8 6	±78 ,

U2AI			, 2- ,
U2AI_0_10V_M	0 0 4		0÷10
U2AI_0_20mA_M	0 0 9 5		0÷20
U2AI_0_5mA_M	0 0 9 4		0÷5
U2AI_0_5V_M	0 0 4 B		0÷5
U2AI_10mA_M	0 0 9 8		±10
U2AI_10V_M	0 0 4 A		±10
U2AI_4_20mA_M	0 0 9 6		4÷20
U2AI_5mA_M	0 0 9 7		±5
U2AI_5V_M	0 0 4 9		±5
U2AR_100Om_M	0 0 B 7		100
U2AR_200Om_M	0 0 B 8		200

	U2AR_500Om_M	0 0 B 9	500
U2AI /C			, 2- , ,
	U2AI_0_19mV_M	0 0 9 B	0÷19
	U2AI_0_78mV_M	0 0 9 C	0÷78
	U2AI_19mV_M	0 0 9 9	±19
	U2AI_78mV_M	0 0 9 A	±78
U4AI			, 4-
	U4AI_0_20mA	0 1 5 2	0÷20
	U4AI_4_20mA	0 1 5 3	4÷20
U4AIM			, 4- ,
	U4AI_0_20mA_M	0 0 6 8	0÷20
	U4AI_4_20mA_M	0 0 6 9	4÷20 ,

UTR		
UTR_21	0 0 7 F	250 , .21
UTR_23	0 0 8 0	100 , .23
UTR_50M	0 0 7 D	100 , 50 , W100=2.4280
UTR_50MA	0 0 8 3	100 , 50 , W100=2.4260
UTR_50P	0 0 7 B	250 , 50 , W100=2.3910
UTR_50PA	0 0 8 1	250 , 50 , W100=2.3850
UTR_50PB	0 0 4 3	125 , 50 , W100=2.3910
UTR_50PBA	0 0 4 7	125 , 50 , W100=2.3850
UTR_50PT	0 0 4 0	65 , 50 , W100=2.3910
UTR_50PTA	0 0 4 5	65 , 50 , W100=2.3850
UTR_100M	0 0 7 E	200 , 100 , W100=2.4280
UTR_100MA	0	200 , 100 , W100=2.4260

		0 8 4	
	UTR_100N	0 0 4 2	250 , 100
	UTR_100P	0 0 7 C	500 , 100 , W100=2.3910
	UTR_100PA	0 0 8 2	500 , 100 , W100=2.3850
	UTR_100PB	0 0 4 4	250 , 100 , W100=2.3910
	UTR_100PBA	0 0 4 8	250 , 100 , W100=2.3850
	UTR_100PT	0 0 4 1	130 , 100 , W100=2.3910
	UTR_100PTA	0 0 4 6	130 , 100 , W100=2.3850
U2TR			, 2- ,
	U2TR_100M_M	0 0 B 0	200 , 100 , W100=2.4280
	U2TR_100MA_M	0 0 B 6	200 , 100 , W100=2.4260
	U2TR_100N_M	0 0 A 8	250 , 100
	U2TR_100P_M	0	500 , 100 , W100=2.3910

		0 A E	
	U2TR_100PA_M	0 0 B 4	500 , 100 , W100=2.3850
	U2TR_100PB_M	0 0 A A	250 , 100 , W100=2.3910
	U2TR_100PBA_M	0 0 A C	250 , 100 , W100=2.3850
	U2TR_21_M	0 0 B 1	250 , .21
	U2TR_23_M	0 0 B 2	100 , .23
	U2TR_50M_M	0 0 A F	100 , 50 , W100=2.4280
	U2TR_50MA_M	0 0 B 5	100 , 50 , W100=2.4260
	U2TR_50P_M	0 0 A D	250 , 50 , W100=2.3910
	U2TR_50PA_M	0 0 B 3	250 , 50 , W100=2.3850
	U2TR_50PB_M	0 0 A 9	125 , 50 , W100=2.3910
	U2TR_50PBA_M	0 0 A B	125 , 50 , W100=2.3850

UTC/C		
UTC_A1	0 0 9 1	A1, 0÷78
UTC_A2	0 0 9 2	A2, 0÷78
UTC_A3	0 0 9 3	A3, 0÷78
UTC_B	0 0 8 A	B, 0÷19
UTC_E	0 0 8 D	E, ±78
UTC_J	0 0 8 B	J, ±78
UTC_K	0 0 8 E	K, ±78
UTC_L	0 0 9 0	L, ±78
UTC_N	0 0 8 F	N, ±78
UTC_S	0 0 8 9	S, 0÷19
UTC_T	0 0 8 C	T, ±78

U2TC			
			, 2- , ,
U2TC_A1_M	0 0 A 5		A1, 0÷78
U2TC_A2_M	0 0 A 6		A2, 0÷78
U2TC_A3_M	0 0 A 7		A3, 0÷78
U2TC_B_M	0 0 9 E		B, 0÷19
U2TC_E_M	0 0 A 1		E, ±78
U2TC_J_M	0 0 9 F		J, ±78
U2TC_K_M	0 0 A 2		K, ±78
U2TC_L_M	0 0 A 4		L, ±78
U2TC_N_M	0 0 A 3		N, ±78
U2TC_S_M	0 0 9 D		S, 0÷19
U2TC_T_M	0 0 A		T, ±78

		0	
UT3	, 3-		
	UT3_100M	0 0 E 3	200 , 100 , W100=2.4280
	UT3_100MA	0 0 E E	200 , 100 , W100=2.426
	UT3_100N	0 0 E 8	250 , 100
	UT3_100P	0 0 E 1	500 , 100 , W100=2.3910
	UT3_100PA	0 0 E C	500 , 100 , W100=2.3850
	UT3_100PB	0 0 E A	250 , 100 , W100=2.3910
	UT3_100PBA	0 0 F 2	250 , 100 , W100=2.3850
	UT3_21	0 0 E 4	250 , .21
	UT3_23	0 0 E 5	100 , .23
	UT3_50M	0 0 E 2	100 , 50 , W100=2.4280
	UT3_50MA	0 0 E	100 , 50 , W100=2.4260

		D	
	UT3_50P	0 0 E 0	250 , 50 , W100=2.3910
	UT3_50PA	0 0 E B	250 , 50 , W100=2.3850
	UT3_50PB	0 0 E 9	125 , 50 , W100=2.3910
	UT3_50PBA	0 0 F 1	125 , 50 , W100=2.3850
UT3	, 3-		
	UT3_100M_M	0 0 C C	200 , 100 , W100=2.4280
	UT3_100MA_M	0 0 D 3	200 , 100 , W100=2.4260
	UT3_100N_M	0 0 C F	250 , 100
	UT3_100P_M	0 0 C A	500 , 100 , W100=2.3910
	UT3_100PA_M	0 0 D 1	500 , 100 , W100=2.3850
	UT3_21_M	0 0 C D	250 , .21
	UT3_23_M	0 0	100 , .23

		C E	
	UT3_50M_M	0 0 C B	100 , 50 , W100=2.4280
	UT3_50MA_M	0 0 D 2	100 , 50 , W100=2.4260
	UT3_50P_M	0 0 C 9	250 , 50 , W100=2.3910
	UT3_50PA_M	0 0 D 0	250 , 50 , W100=2.3850
UT4	, 4-		
	UT4_100M	0 0 F 6	200 , 100 , W100=2.4280
	UT4_100MA	0 0 C 6	200 , 100 , W100=2.4260
	UT4_100N	0 0 F B	250 , 100
	UT4_100P	0 0 F 4	500 , 100 , W100=2.3910
	UT4_100PA	0 0 F F	500 , 100 , W100=2.3850
	UT4_100PB	0 0 F D	250 , 100 , W100=2.3910
	UT4_100PBA	0 1	250 , 100 , W100=2.385

		0 5	
	UT4_100PT	0 0 F A	130 , 100 , W100=2.3910
	UT4_100PTA	0 1 0 3	130 , 100 , W100=2.3850
	UT4_21	0 0 F 7	250 , .21
	UT4_23	0 0 F 8	100 , .23
	UT4_50M	0 0 F 5	100 , 50 , W100=2.4280
	UT4_50MA	0 1 0 0	100 , 50 , W100=2.4260
	UT4_50P	0 0 F 3	250 , 50 , W100=2.3910
	UT4_50PA	0 0 F E	250 , 50 , W100=2.3850
	UT4_50PB	0 0 F C	125 , 50 , W100=2.3910
	UT4_50PBA	0 1 0 4	125 , 50 , W100=2.3850
	UT4_50PT	0 0 F 9	65 , 50 , W100=2.3910

	UT4_50PTA	0 1 0 2	65 , 50 , W100=2.3850
UT4	, 4-		
	UT4_100M_M	0 0 B D	200 , 100 , W100=2.4280
	UT4_100MA_M	0 0 C 6	200 , 100 , W100=2.4260
	UT4_100N_M	0 0 C 0	250 , 100
	UT4_100P_M	0 0 B B	500 , 100 , W100=2.3910
	UT4_100PA_M	0 0 C 4	500 , 100 , W100=2.3850
	UT4_100PB_M	0 0 C 2	250 , 100 , W100=2.3910
	UT4_100PBA_M	0 0 C 8	250 , 100 , W100=2.3850
	UT4_21_M	0 0 B E	250 , .21
	UT4_23_M	0 0 B F	100 , .23
	UT4_50M_M	0 0 B	100 , 50 , W100=2.428

		C	
	UT4_50MA_M	0 0 C 5	100 , 50 , W100=2.4260
	UT4_50P_M	0 0 B A	250 , 50 , W100=2.391
	UT4_50PA_M	0 0 C 3	250 , 50 , W100=2.3850
	UT4_50PB_M	0 0 C 1	125 , 50 , W100=2.3910
	UT4_50PBA_M	0 0 C 7	125 , 50 , W100=2.3850
U2T4	2-		, 4-
	U2T4_100M_M	0 0 D B	200 , 100 , W100=2.4280
	U2T4_100MA_M	0 0 D F	200 , 100 , W100=2.4260
	U2T4_21_M	0 0 D C	250 , .21
	U2T4_23_M	0 0 D D	100 , .23
	U2T4_50M_M	0 0 D A	100 , 50 , W100=2.4280
	U2T4_50MA_M	0 0	100 , 50 , W100=2.4260

		D	
		E	
/			
	U920L	0 0 3 9	/
	U4DO-G	0 1 2 1	4

-

U2DI

U2DI_110	1	
U2DI_220	2	
U2DI_12	1	,
U2DI_12_I		1
U2DI_12_Ex	2	,
U2DI_12_IEx		2
U2DI_24		
U2DI_24_I		
U2DI_24_C		
U2DI_24_CEx		
U2DI_24_Ex		
U2DI_24_IC		
U2DI_24_IEx		
U2DI_24_IEx		

U4DI

- 1
- 2
- 3
- 4

-

U2DO

 1
 2
U2DOH

 1
 2
UDOH

 1
U4DO

 1
 2
 3
 4
UDO/VAC

 1

-

U2RO

U2RO_110_10_NC	1	
U2RO_110_10_NCC	2	
U2RO_110_10_NO		
U2RO_110_10_NOC		

U2RO_110_50_NO U2RO_220_05_NC U2RO_220_05_NCC U2RO_220_05_NO U2RO_220_05_NOC U2RO_220_50_NO		
URO_110_10_DT URO_110_10_DT URO_220_05_DT URO_220_05_DTC	1	

USW

U2SWD, U2SWDR

- 1
- 2

U4SWS, U4SWSR

- 1
- 2
- 3
- 4

USWD

- 1

URO

URO_110_10_DT URO_110_10_DT URO_220_05_DT URO_220_05_DTC	1	

-

U1CI_DI

-

() ,

- 2147483647
- 10

U8DI.

M1031D, M1032D

```

:
  U8DI,
  U8DI
U1CI_DI 1- 8
U1CI_DI 1.
U1CI_DI 2.

```

OPERATE 1 0.

```

ST «reset_cnt»
: OPERATE, «CNT1_2_1»

```

```

IF reset_cnt1_2_1=TRUE THEN
  reset_cnt1_2_1:=FALSE;
  reset_cnt(CNT1_2_1, 1, 0);
*)
END_IF;

```

U2C/DI

```

1 , 231 -1
2 , 231 -1
3 ,

```

U4C/DI

```

1 , 231 -1
2 , 231 -1
3 , 231 -1
4 , 231 -1
5 ,

```

-

UAO

```

1 , mA

```

-

UAI

1

UAI

1

UAI/C

1

U2AI

1

2

U2AI /C

1

2

U4AI

1

2

3

4

U4AIM

1

2

3

4

UTR

—
1

U2TR

—
1

2

UTC/C

—
1

U2TC

—
1

2

UT3

—
1

UT3

—
1

UT4

—
1

UT4

—

1

U2T4

1

2

UAR

:	:	UAR-100Om	
:	:	TREI	
:	:		100Om
:	:	1 -	

:	:	UAR-200Om	
:	:	TREI	
:	:		200Om
:	:	1 -	

:	:	UAR-500Om	
:	:	TREI	
:	:		500Om
:	:	1 -	

UR3

:	:	UR3-100Om	
:	:	TREI	
:	:		100Om, 3-
:	:	1 -	

:	:	UR3-200Om	
:	:	TREI	
:	:		200Om, 3-
:	:	1 -	

:	:	UR3-500Om	
:	:	TREI	
:	:		500Om, 3-
:	:	1 -	

UR4

:	:	UR4-100Om	
:	:	TREI	
:	:		100Om, 4-
:	:	1 -	

:	UR4-200Om		
:	TREI		
:		200Om, 4-	
:	1 -		
:	UR4-500Om		
:	TREI		
:		500Om, 4-	
:	1 -		
U2AI			
:	U2AI-0_5mA-M		
:	TREI		
:			0-5 mA
:	1 -		
:	2 -		
:	U2AI-0_20mA-M		
:	TREI		
:			0-20 mA
:	1 -		
:	2 -		
:	U2AI-4_20mA-M		
:	TREI		
:			4-20 mA
:	1 -		
:	2 -		
:	U2AI-5mA-M		
:	TREI		
:			+5 mA
:	1 -		
:	2 -		
:	U2AI-10mA-M		
:	TREI		
:			+10 mA
:	1 -		
:	2 -		
:	U2AI-5V-M		
:	TREI		
:			+5 V

:	1 -		
	2 -		
:	U2AI-10V-M		
	TREI		
:			+ -10 V
:	1 -		
	2 -		
:	U2AI-0_5V-M		
	TREI		
:			0...5 V
:	1 -		
	2 -		
:	U2AI-0_10V-M		
	TREI		
:			0...10 V
:	1 -		
	2 -		
:	U2AI-19mV-M		
	TREI		
:			+ -19 mV
:	1 -		
	2 -		
:	U2AI-75mV-M		
	TREI		
:			+ -75 mV
:	1 -		
	2 -		
:	U2AI-0_19mV-M		
	TREI		
:			0-19 mV
:	1 -		
	2 -		
:	U2AI-0_75mV-M		
	TREI		
:			0-75 mV

:	1 -		
	2 -		
:	U2AI-0_20mA		
:	TREI		
:		, 2-	0...20
:	1		A
	2		B
	3		A
	4		B
:	U2AI-4_20mA		
:	TREI		
:		, 2-	4...20
:	1		A
	2		B
	3		A
	4		B
U2T4			
:	U2T4-50 -		
:	TREI		
:			50
	4-		
	100 Om, W100 = 1.4280		
:	1 -		
	2 -		
:	U2T4-50		
:	TREI		
:			50
	4-		
	100 Om, W100 = 1.4260		
:	1 -		
	2 -		
:	U2T4-21		
:	TREI		
:			21
	4-	, 250 Om	
:	1 -		
	2 -		
:	U2T4-23		
:	TREI		
:			23

4- , 100 Om
1 -
2 -

: U2T4-100
: TREI
: 100
4-
200 Om, W100 = 1.4280
1 -
2 -

: U2T4-100
: TREI
: 100
4-
200 Om, W100 = 1.4260
1 -
1 -

U2TC

: U2TC-A1-
: TREI
: A1, 0-75
1 -
2 -

: U2TC-A2-
: TREI
: A2, 0-75
1 -
2 -

: U2TC-A3-
: TREI
: A3, 0-75
1 -
2 -

: U2TC-B-
: TREI
: B, 0-19
1 -

2 -

:	U2TC-E-	
:	TREI	
:		E, +-75
:	1 -	
:	2 -	
:	U2TC-J-	
:	TREI	
:		J, +-75
:	1 -	
:	2 -	
:	U2TC-K-	
:	TREI	
:		K, +-75
:	1 -	
:	2 -	
:	U2TC-L-	
:	TREI	
:		L, +-75
:	1 -	
:	2 -	
:	U2TC-N-	
:	TREI	
:		N, +-75
:	1 -	
:	2 -	
:	U2TC-S-	
:	TREI	
:		S, 0-19
:	1 -	
:	2 -	
:	U2TC-T-	
:	TREI	

T, +-75

2- : 1 -

U2TR

: U2TR-21-
: TREI
:
: 21, 250 Om
: 1 -
: 2 -

: U2TR-23-
: TREI
:
: 23, 100 Om
: 1 -
: 2 -

: U2TR-50 -
: TREI
:
: 100 Om, W100 = 1.4280
: 1 -
: 2 -

: U2TR-50 -
: TREI
:
: 100 Om, W100 = 1.4260
: 1 -
: 2 -

: U2TR-50P-
: TREI
:
: 250 Om, W100 = 1.3910
: 1 -
: 2 -

: U2TR-50P -
: TREI
:
: 250 Om, W100 = 1.3850
: 1 -
: 2 -

:	U2TR-50P -	
:	TREI	
:		50
:	125 Om, W100 = 1.3910	
:	1 -	
:	2 -	
:	U2TR-50P A-	
:	TREI	
:		50 A
:	125 Om, W100 = 1.3850	
:	1 -	
:	2 -	
:	U2TR-100 -	
:	TREI	
:		100
:	200 Om, W100 = 1.4280	
:	1 -	
:	2 -	
:	U2TR-100 -	
:	TREI	
:		100
:	200 Om, W100 = 1.4260	
:	1 -	
:	2 -	
:	U2TR-100N-	
:	TREI	
:		100H, 250 Om
:	1 -	
:	2 -	
:	U2TR-100P-	
:	TREI	
:		100
:	500 Om, W100 = 1.3910	
:	1 -	
:	2 -	
:	U2TR-100P -	
:	TREI	
:		100
:	500 Om, W100 = 1.3850	

: 1 -
 : 2 -

 : U2TR-100PB-
 : TREI
 : 100 B
 : 250 Om, W100 = 1.3910
 : 1 -
 : 2 -

 : U2TR-100PBA-
 : TREI
 : 100 BA
 : 250 Om, W100 = 1.3850
 : 1 -
 2-

U2AR

: U2AR-100Om-
 : TREI
 : 100Om
 : 1 -
 : 2 -

 : U2AR-200Om-
 : TREI
 : 200Om
 : 1 -
 : 2 -

 : U2AR-500Om-
 : TREI
 : 500Om
 : 1 -
 : 2 -

/

U920L

_____ M953C M920L
 (Full Duplex)

 1 ()

2 ()
 3 ()
 4 ()

: M920L
 «Unimod Pro. M920L».

U2SWD

: U2SWD
 : TREI
 :
 2
 : 1 -
 1 -

U4SWS

: U4SWS
 : TREI
 :
 4
 : 1 -
 2 -
 3 -
 4 -

U4SWSR

: U4SWSR
 : TREI
 :
 4
 : 1 -
 2 -
 3 -
 4 -

U2SWDR

: U2SWDR
 : TREI
 :
 2
 : 1 -
 2-

USWD

: USWD
: TREI
:
: 1 1 ,
: 1 -

MPRX

: MPRX-24
: TREI
: - , 24
:
1 (/).
2 (/).
3 (/).
4 (/).
5 (/).
6 (/).
7 (/).
8 .

:
16 8- PRX- , - .
:
TREI-5B-XX-ISaGRAF-UM v2.5.doc, 53.
.xls, 2.
:
usability, , " "
8- 7-

U4DO-G

: U4DO-G
: TREI
: 4

“ ”
-2 - 131070
0 0
“ »
«m932CG_one_pulse.uaf»
0
« »
0
:
1 0 ().
2 0 ().
1 1 ().
2 1 ().
3 2 ().
4 2 ().
5 3 ().
6 ():
0 - 0
1 - 1
2 - 2
3 - 3

- E -

E931A 77
E931R3 77
E931T 77
E931V 78
E933O_S 78
E941B 78
E941O 78
E941R1 78
E941R2 79
E943D 79
E943D_S 79
E943F 79
E943O 79
E943O_S 79
E951A 79
E951B 79
E951O 80
E952B 80
E952O 80
E953C 80
E953C01 80
E953C02 81
E953C03 81
E953C04 82
E953C05 82
E953C06 83
E953C07 83
E953C08 84
E953C09 84
E953C10 84
E953C11 85
E954B 85
E954D 86
E954O 86

- L -

Library 9

- M -

M2AI 107
M2CI/DI 102
M2DI 101
M2DO 102
M4AI 105
M4DI 102
M4DO 102
M811E 21
M831A 22
M831R3 22
M831T 23
M831V 23
M832 23
M833O_S 24
M835T 25
M841B 25
M841E 21
M841O 26
M841R1 26
M841R2 26
M842A 27
M843D 26
M843D_S 27
M843F 27
M843O 27
M843O_S 28
M845A1 28
M845A2 28
M845A3 29
M845T 29
M851A 29
M851B 29
M851O 30
M852B 30
M852O 31
M853 31
M854B 32
M854D 33
M854O 33
M855A 34
M911E 21
M921E 77
MAI 105
MAI/C 105
MAOI 104

MAOU 104
MAR 106
MCI-MI 103
MCI-TPU 103
MDO 102
MPRX 147
MR3 106
MR4 107
MSTB 104
MTC/C 105
MTR 105
M V 106
M 106
M 3 105
M 4 105

- P -

PC 20

- U -

U1CI_DI 133
U2AI 138
U2AI 135
U2AI /C 135
U2AR 145
U2CI/DI 134
U2DI 131
U2DO 132
U2DOH 132
U2RO 132
U2SWD 146
U2SWDR 146
U2T4 140
U2T4 137
U2TC 141
U2TC 136
U2TR 143
U2TR 136
U4AI 135
U4AIM 135
U4CI/DI 134
U4DI 131
U4DO 132
U4DO-G 147
U4SWS 146

U4SWSR 146
U920L 145
UAI 135
UAI/C 135
UAI 135
UAO 134
UAR 137
UDO/VAC 132
UDOH 132
UR3 137
UR4 137
URO 133
USW 133
USWD 147
UT3 136
UT3 136
UT4 136
UT4 136
UTC/C 136
UTR 136

- W -

W931R3 56
W931V 57
W931 56
W931 57
W933O_S 57
W935 58
W941B 58
W941R1 59
W941R2 59
W941 59
W942A 60
W943D 60
W943D_S 60
W943F 61
W943O 61
W943O_S 61
W945A1 61
W945A2 62
W945A3 62
W945 63
W951A 63
W951B 63
W951O 64
W952B 64
W952O 65

W953 65
W953 01 66
W953 02 67
W953 03 68
W953 04 69
W953 05 70
W953 06 71
W953 07 71
W953 08 72
W953 09 73
W953 10 73
W953 11 74
W954B 75
W954D 76
W954O 76
W955A 76

- X -

XM841B 34
XM841O 34
XM843D 35
XM843D_S 35

- Z -

104
147
146
/
145
4CI/DI 102
827L 21
827L2_LCD 21
827L3_VFD 21
931R3 36
931V 36
931 35
931 36
932 37
932 G 37
933O_S 37
935 37
941A 38
941B 38
941R1 39
941R2 39
941 38

942 39
943D 40
943D_S 40
943F 40
943O 40
943O_S 41
945A1 41
945A2 41
945A3 42
945 42
951A 42
951B 42
951O 43
952B 43
952O 44
953 44
953 01 45
953 02 46
953 03 47
953 04 48
953 05 49
953 06 50
953 07 50
953 08 51
953 09 52
953 10 52
953 11 53
954B 54
954D 55
954O 55
955A 55
- 20
- M841E 21
- M911E 21
- PC 20
- 86, 101, 102, 104, 105
9
13, 16
/
22
56
16
10
86
/
13
147
16
14
15

15

- 107, 131, 132, 133, 134, 135
